

RDH10 antibody



Catalog Number: 114583

Product name

RDH10 antibody

Recommended Dilution:

WB: 1:500-1:5000

Specificity

Human, Mouse, Rat; other species not tested.

IP: 1:200-1:2000

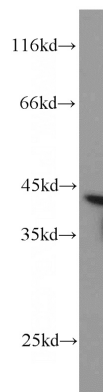
IHC: 1:20-1:200

Antibody description

RDH10 Rabbit Polyclonal antibody. Positive IF detected in RAW 264.7 cells. Positive IHC detected in human lung cancer tissue. Positive WB detected in human kidney tissue, A549 cells, HEK-293 cells, HepG2 cells, mouse kidney tissue, rat liver tissue. Positive IP detected in mouse liver tissue. Observed molecular weight by Western-blot: 39 kDa

IF: 1:50-1:500

Validations



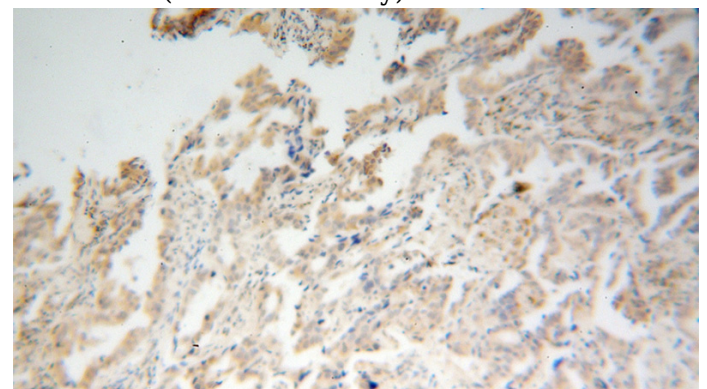
Preparation

This antibody was obtained by immunization of RDH10 recombinant protein (Accession Number: NM_172037). Purification method: Antigen affinity purified.

human kidney tissue were subjected to SDS PAGE followed by western blot with Catalog No:114583(RDH10 antibody) at dilution of 1:1000

Formulation

PBS with 0.02% sodium azide and 50% glycerol pH 7.3.



Storage

Store at -20°C. DO NOT ALIQUOT

Clonality

Polyclonal

Ig Type

Rabbit IgG

Immunohistochemical of paraffin-embedded human lung cancer using Catalog No:114583(RDH10 antibody) at dilution of 1:100 (under 10x lens)

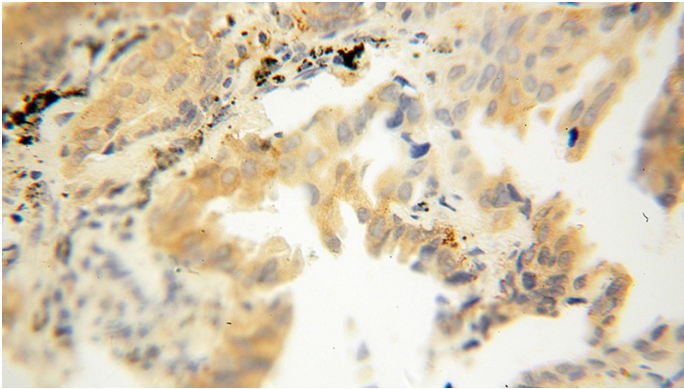
Applications

ELISA, WB, IHC, IP, IF

Dilutions

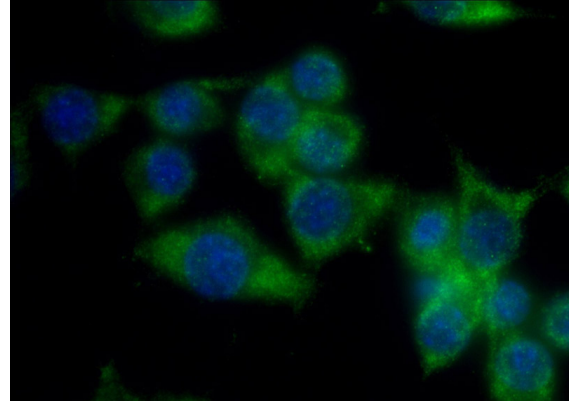
RDH10 antibody

Catalog Number: 114583

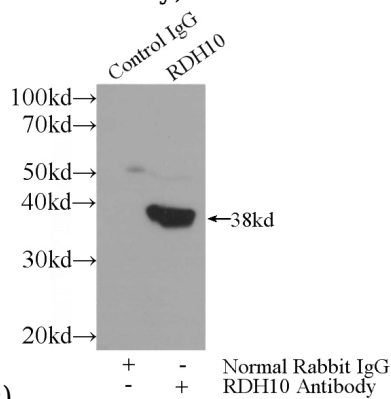


Immunohistochemical of paraffin-embedded human lung cancer using Catalog No:114583(RDH10 antibody) at dilution of 1:100

IP Result of anti-RDH10 (IP:Catalog No:114583, 3ug; Detection:Catalog No:114583 1:700) with mouse liver tissue lysate 4000ug.



Immunofluorescent analysis of (-20oc Ethanol) fixed RAW 264.7 cells using Catalog No:114583(RDH10 Antibody) at dilution of 1:50 and Alexa Fluor 488-conjugated AffiniPure Goat Anti-Rabbit IgG(H+L)



(under 40x lens)