

PARD6B antibody

Catalog Number: 113583

Product name

PARD6B antibody

WB: 1:500-1:5000

IP: 1:200-1:1000

Specificity

Human, Mouse, Rat; other species not tested.

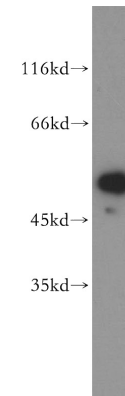
IHC: 1:20-1:200

IF: 1:10-1:100

Antibody description

PARD6B Rabbit Polyclonal antibody. Positive IF detected in HepG2 cells, MCF-7 cells. Positive IHC detected in human pancreas tissue. Positive FC detected in HepG2 cells. Positive WB detected in HeLa cells, human placenta tissue, PC-3 cells. Positive IP detected in HEK-293 cells. Observed molecular weight by Western-blot: 50-53 kDa

Validations



Preparation

This antibody was obtained by immunization of PARD6B recombinant protein (Accession Number: NM_032521). Purification method: Antigen affinity purified.

HeLa cells were subjected to SDS PAGE followed by western blot with Catalog No:113583(PARD6B antibody) at dilution of 1:500

Formulation

PBS with 0.02% sodium azide and 50% glycerol pH 7.3.

Storage

Store at -20°C. DO NOT ALIQUOT

Clonality

Polyclonal

Ig Type

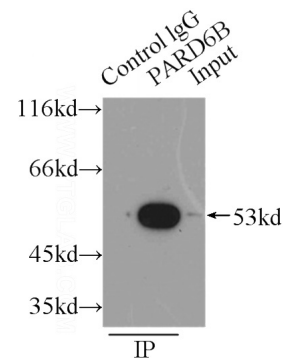
Rabbit IgG

Applications

ELISA, WB, IHC, IF, IP, FC

Dilutions

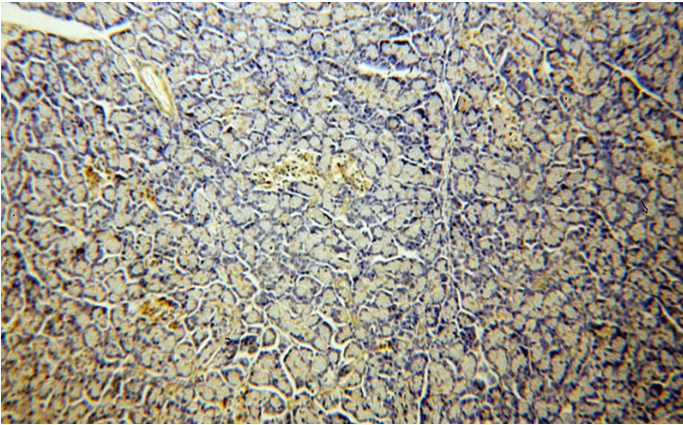
Recommended Dilution:



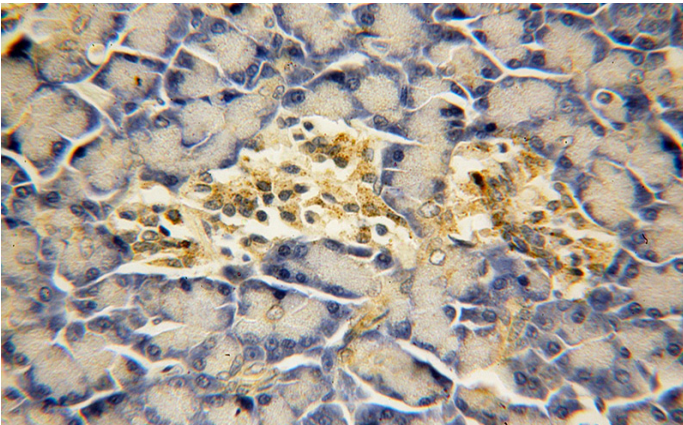
IP Result of anti-PARD6B (IP:Catalog No:113583, 3ug; Detection:Catalog No:113583 1:200) with HEK-293 cells lysate 6000ug.

PARD6B antibody

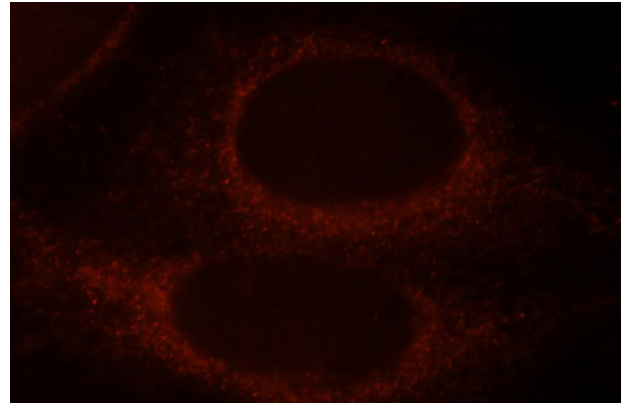
Catalog Number: 113583



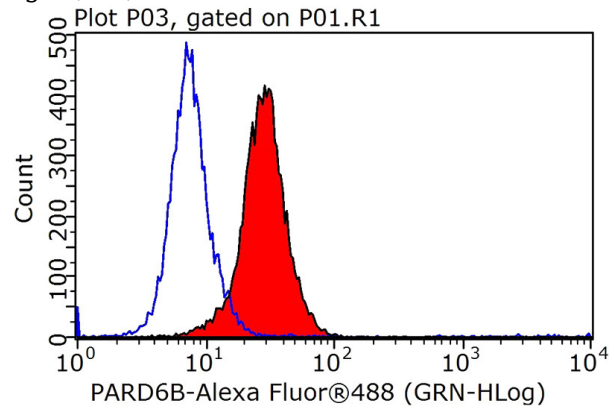
Immunohistochemical of paraffin-embedded human pancreas using Catalog No:113583(PARD6B antibody) at dilution of 1:100 (under 10x lens)



Immunohistochemical of paraffin-embedded human pancreas using Catalog No:113583(PARD6B antibody) at dilution of 1:100 (under 40x lens)



Immunofluorescent analysis of HepG2 cells, using PARD6B antibody Catalog No:113583 at 1:25 dilution and Rhodamine-labeled goat anti-rabbit IgG (red).



1X10⁶ HepG2 cells were stained with 0.2ug PARD6B antibody (Catalog No:113583, red) and control antibody (blue). Fixed with 90% MeOH blocked with 3% BSA (30 min). Alexa Fluor 488-conjugated AffiniPure Goat Anti-Rabbit IgG(H+L) with dilution 1:1000.