

# FAM20A antibody

Catalog Number: 110583

## Product name

FAM20A antibody

## Specificity

Human, Mouse; other species not tested.

## Antibody description

FAM20A Rabbit Polyclonal antibody. Positive WB detected in mouse lung tissue. Positive IHC detected in human liver cancer tissue, human ovary tissue. Observed molecular weight by Western-blot: 62 kDa

## Preparation

This antibody was obtained by immunization of FAM20A recombinant protein (Accession Number: NM\_017565). Purification method: Antigen affinity purified.

## Formulation

PBS with 0.1% sodium azide and 50% glycerol pH 7.3.

## Storage

Store at -20°C. DO NOT ALIQUOT

## Clonality

Polyclonal

## Ig Type

Rabbit IgG

## Applications

ELISA, WB, IHC

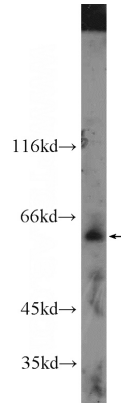
## Dilutions

Recommended Dilution:

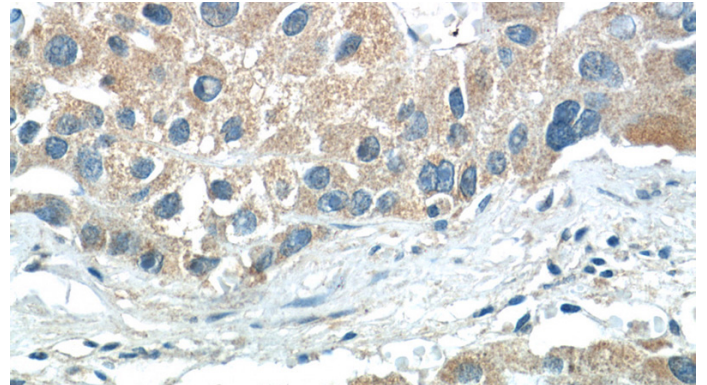
WB: 1:200-1:2000

IHC: 1:20-1:200

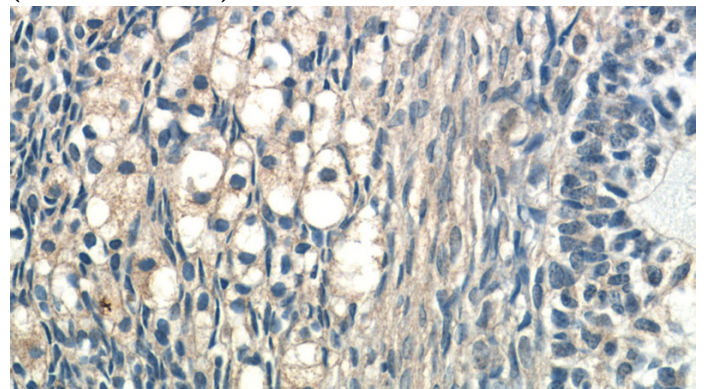
## Validations



mouse lung tissue were subjected to SDS PAGE followed by western blot with Catalog No:110583(FAM20A Antibody) at dilution of 1:600



Immunohistochemistry of paraffin-embedded human liver cancer tissue slide using Catalog No:110583(FAM20A Antibody) at dilution of 1:50 (under 40x lens)



Immunohistochemistry of paraffin-embedded human ovary tissue slide using Catalog No:110583(FAM20A Antibody) at dilution of 1:50

# FAM20A antibody



Catalog Number: 110583

---

(under 40x lens)