

Anti-GM-CSF / CSF2 antibody



Catalog Number: 100583

Product name

Anti-GM-CSF / CSF2 antibody

Immunogen

[Human GM-CSF / CSF2 \(His Tag\) recombinant protein](#)

Specificity

Human GM-CSF / CSF2

Antibody description

Rabbit polyclonal to GM-CSF / CSF2

Preparation

Produced in rabbits immunized with purified, recombinant Human GM-CSF / CSF2 (rh GM-CSF / CSF2; NP_000749.2; Ala18-Glu144). GM-CSF / CSF2 specific IgG was purified by Human GM-CSF / CSF2 affinity chromatography.

Formulation

0.2 μ m filtered solution in PBS with 5% trehalose

Storage

This antibody can be stored at 2°C-8°C for one month without detectable loss of activity. Antibody products are stable for twelve months from date of receipt when stored at -20°C to -80°C.

Preservative-Free.

Sodium azide is recommended to avoid contamination (final concentration 0.05%-0.1%). It is toxic to cells and should be disposed of properly. Avoid repeated freeze-thaw cycles.

Clonality

Polyclonal

Ig Type

Rabbit IgG

Applications

ELISA, WB

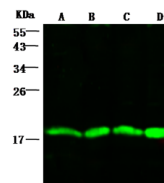
Dilutions

WB: 2-5 μ g/mL

ELISA: 0.1-0.2 μ g/mL

This antibody can be used at 0.1-0.2 μ g/mL with the appropriate secondary reagents to detect Human GM-CSF / CSF2. The detection limit for Human GM-CSF / CSF2 is approximately 0.00975 ng/well.

Validations



	Lanes			
Items	A	B	C	D
Sample (whole cell lysate)	U937	293T	THP-1	Jurkat
Sample Volume (μ g/lane)	20			
Gel	13% SDS-PAGE reducing gel			
Recommended Concentration	2.5 μ g/ml			
Secondary Antibody	Dylight 800-labeled Antibody To Rabbit IgG (H+L), at 1:5000 dilution.			

GM-CSF / CSF2 Antibody, Rabbit PAb, Antigen Affinity Purified, Western blot