

# CAT-1 antibody

Catalog Number: 108883

## Product name

CAT-1 antibody

## Specificity

Human, Mouse, Rat; other species not tested.

## Antibody description

CAT-1 Rabbit Polyclonal antibody. Positive WB detected in rat brain/liver tissue, HepG2 cells, Jurkat cells, mouse heart tissue, mouse liver tissue. Positive IHC detected in human osteosarcoma tissue. Observed molecular weight by Western-blot: 67-70kd

## Preparation

This antibody was obtained by immunization of CAT-1 recombinant protein (Accession Number: XM\_017020716). Purification method: Antigen affinity purified.

## Formulation

PBS with 0.02% sodium azide and 50% glycerol pH 7.3.

## Storage

Store at -20°C. DO NOT ALIQUOT

## Clonality

Polyclonal

## Ig Type

Rabbit IgG

## Applications

ELISA, IHC, WB

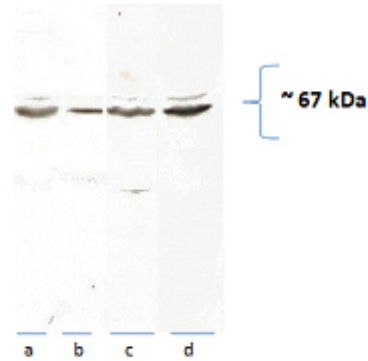
## Dilutions

Recommended Dilution:

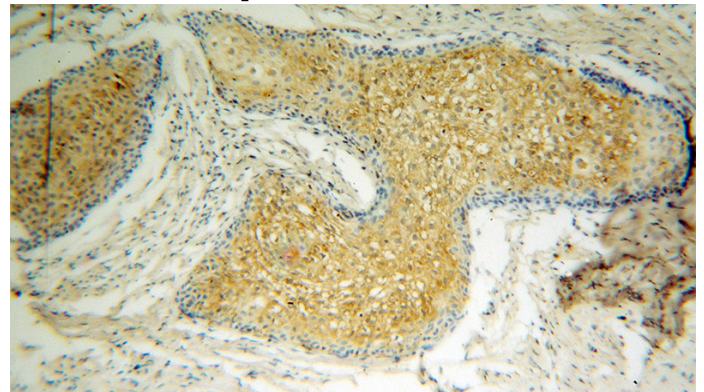
WB: 1:500-1:5000

IHC: 1:20-1:200

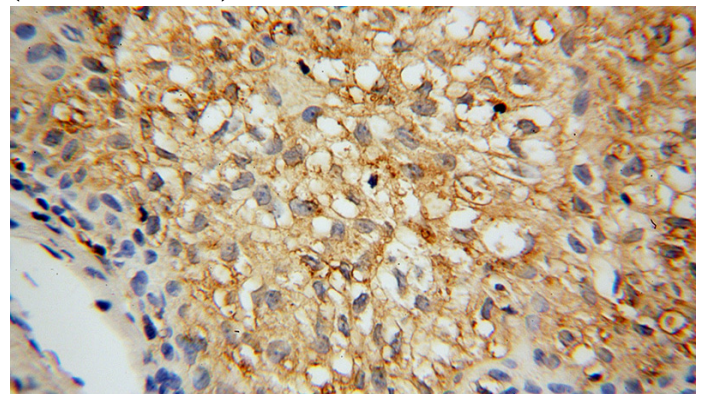
## Validations



WB result of Catalog No:108883 from Dilwar in Rat tissue. Rat brain (a), heart (b) liver (c) mitochondria and liver homogenate (d), (40 ug with 10% PAGE) probed with 1:1000 dilution.



Immunohistochemical of paraffin-embedded human osteosarcoma using Catalog No:108883(SLC7A1 antibody) at dilution of 1:100 (under 10x lens)



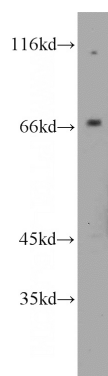
Immunohistochemical of paraffin-embedded human osteosarcoma using Catalog No:108883(SLC7A1 antibody) at dilution of 1:100

# CAT-1 antibody



Catalog Number: 108883

---



mouse liver tissue were subjected to SDS PAGE followed by western blot with Catalog No:108883(SLC7A1 antibody) at dilution of 1:800

(under 40x lens)