

Anti-Phospho-GSK3 beta (Ser9) Rabbit antibody



Catalog Number: 166883

Product name

Anti-Phospho-GSK3 beta (Ser9) Rabbit antibody

Specificity

Human, Mouse, Rat

Antibody description

Phospho-GSK3 beta (Ser9) Rabbit polyclonal antibody

Preparation

Antigen: Peptide sequence around phosphorylation site of serine 9 (T-T-S(p)-F-A) derived from Human GSK3 β .

Formulation

Supplied at 1.0mg/mL in phosphate buffered saline (without Mg²⁺ and Ca²⁺), pH 7.4, 150mM NaCl, 0.02% sodium azide and 50% glycerol.

Storage

Store at 4°C short term. Store at -20°C long term. Avoid freeze / thaw cycle.

Clonality

Polyclonal

Ig Type

Rabbit IgG

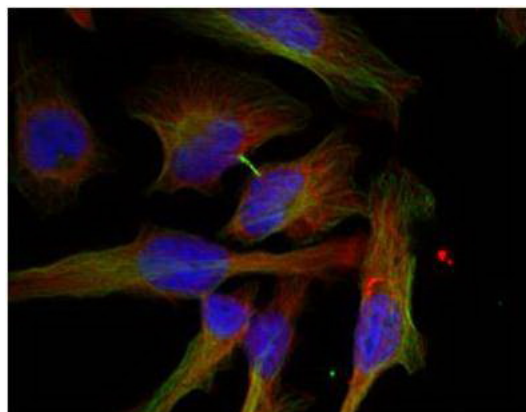
Applications

WB, IHC-P, ICC/IF

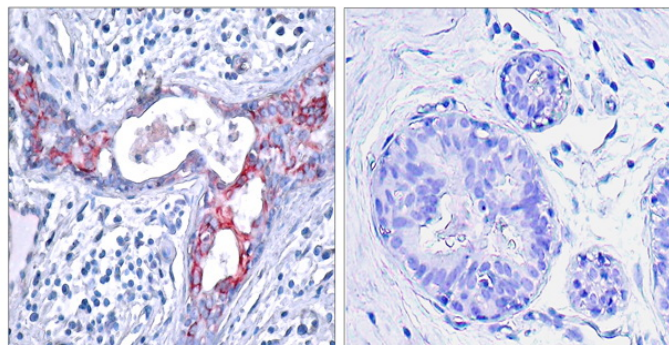
Dilutions

WB:1/500-1/1000 ICC:1/100-1/200 IHC:1/50-1/100

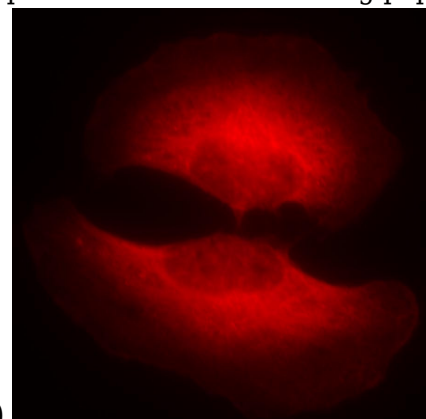
Validations



Immunofluorescence staining of methanol-fixed HeLa cells showing cytoplasmic staining using GSK3u03b2 (Phospho-Ser9) Antibody .



Immunohistochemical analysis of paraffin-embedded human breast carcinoma tissue using GSK3u03b2 (Phospho-Ser9) Antibody (left) or the same antibody preincubated with blocking peptide



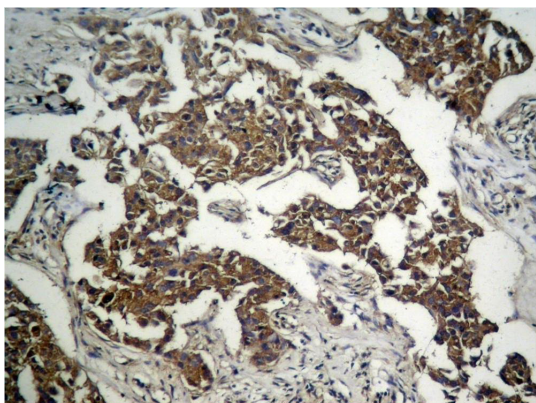
#51002 (right).

Immunofluorescence staining of methanol-fixed HeLa cells showing cytoplasmic staining using GSK3u03b2 (Phospho-Ser9) Antibody .

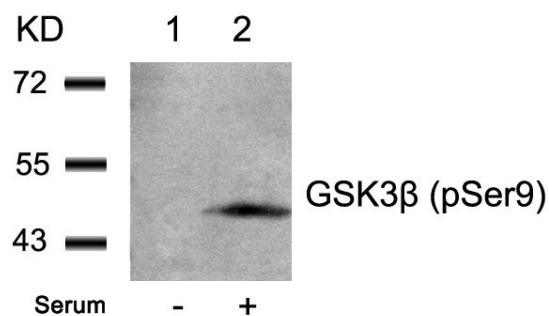
Anti-Phospho-GSK3 beta (Ser9) Rabbit antibody



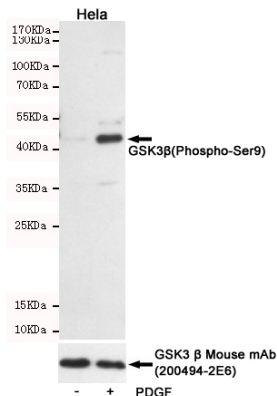
Catalog Number: 166883



Immunohistochemical analysis of paraffin-embedded human Lung carcinoma tissue using GSK3u03b2 (Phospho-Ser9) Antibody .



Western blot analysis of extracts from 293 cells untreated (lane 1) or treated with serum (lane 2) using GSK3u03b2 (Phospho-Ser9) Antibody .



Western blot detection of GSK3u03b2(Phospho-Ser9) in HeLa cells untreated or PDGF-treated, using GSK3u03b2(Phospho-Ser9) Rabbit pAb (dilution 1:2000, upper) or GSK3 u03b2 Mouse mAbn (200494-2E6 dilution 1:1000, lower). Predicted band size:46kDa. Observed band size:46kDa.