

RPL27 antibody



Catalog Number: 114883

Product name

RPL27 antibody

WB: 1:200-1:2000

IHC: 1:20-1:200

Immunogen

[Human RPL27 Recombinant protein \(GST tag\)](#)

Specificity

Human, Mouse, Rat; other species not tested.

Antibody description

RPL27 Rabbit Polyclonal antibody. Positive IHC detected in human liver cancer tissue. Positive WB detected in mouse liver tissue, human liver tissue. Observed molecular weight by Western-blot: 18kd

Preparation

This antibody was obtained by immunization of RPL27 recombinant protein (Accession Number: NM_001349922). Purification method: Antigen affinity purified.

Formulation

PBS with 0.02% sodium azide and 50% glycerol pH 7.3.

Storage

Store at -20°C. DO NOT ALIQUOT

Clonality

Polyclonal

Ig Type

Rabbit IgG

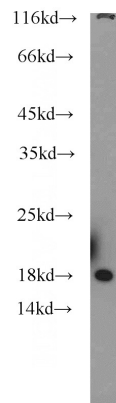
Applications

ELISA, IHC, WB

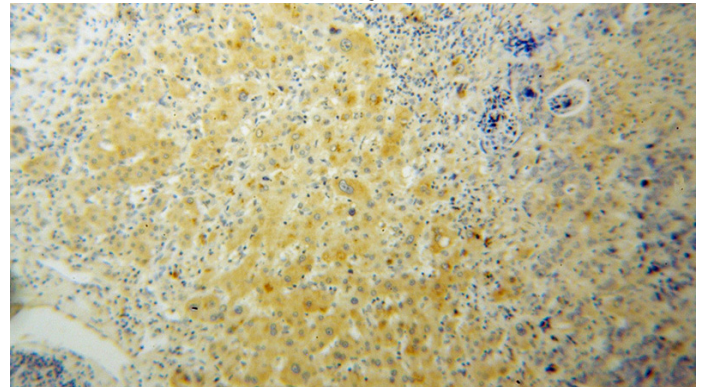
Dilutions

Recommended Dilution:

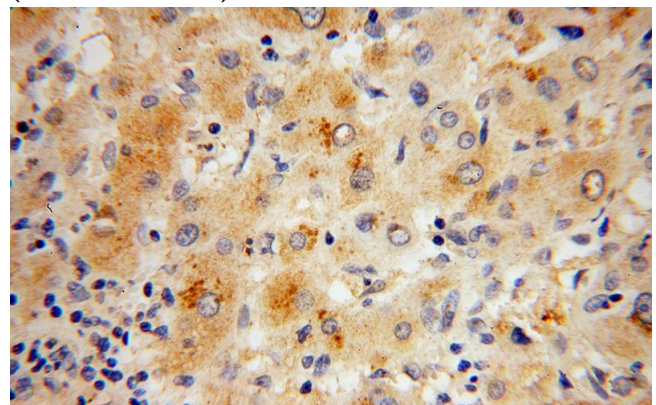
Validations



mouse liver tissue were subjected to SDS PAGE followed by western blot with Catalog No:114883(RPL27 antibody) at dilution of 1:500



Immunohistochemical of paraffin-embedded human liver cancer using Catalog No:114883(RPL27 antibody) at dilution of 1:100 (under 10x lens)



Immunohistochemical of paraffin-embedded

RPL27 antibody



Catalog Number: 114883

human liver cancer using Catalog

No:114883(RPL27 antibody) at dilution of 1:100
(under 40x lens)