

JAML antibody

Catalog Number: 111883

Product name

IHC: 1:20-1:200

JAML antibody

IF: 1:10-1:100

Specificity

Human; other species not tested.

Antibody description

JAML Rabbit Polyclonal antibody. Positive IHC detected in human spleen tissue. Positive IF detected in Hela cells. Positive FC detected in HeLa cells. Positive WB detected in HL-60 cells, Jurkat cells, L02 cells. Observed molecular weight by Western-blot: 30kd,44kd,50-60kd

Preparation

This antibody was obtained by immunization of JAML recombinant protein (Accession Number: NM_001286571). Purification method: Antigen affinity purified.

Formulation

PBS with 0.02% sodium azide and 50% glycerol pH 7.3.

Storage

Store at -20°C. DO NOT ALIQUOT

Clonality

Polyclonal

Ig Type

Rabbit IgG

Applications

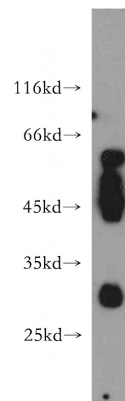
ELISA, WB, IHC, IF, FC

Dilutions

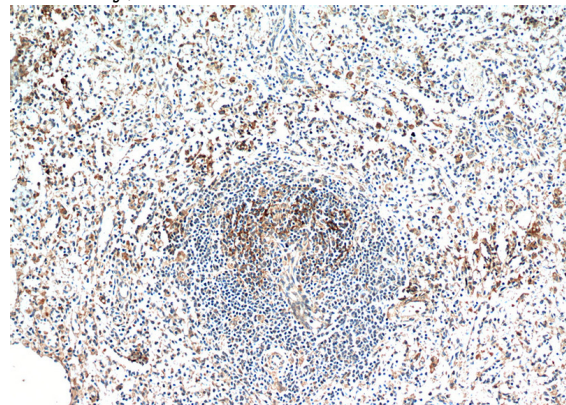
Recommended Dilution:

WB: 1:500-1:5000

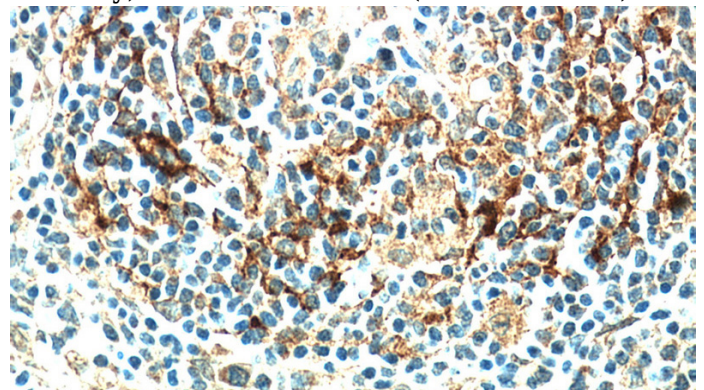
Validations



HL-60 cells were subjected to SDS PAGE followed by western blot with Catalog No:111883(AMICA1 antibody) at dilution of 1:800



Immunohistochemical of paraffin-embedded human spleen using Catalog No:111883(AMICA1 antibody) at dilution of 1:100 (under 10x lens)

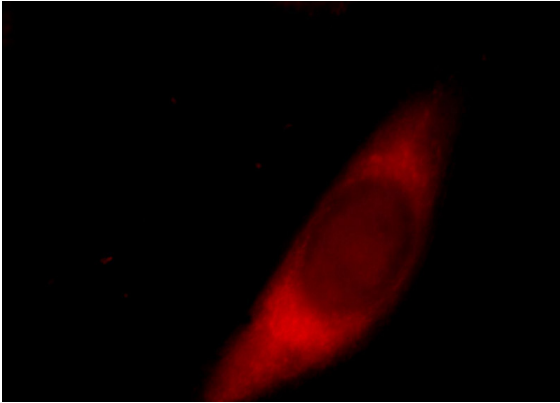


Immunohistochemical of paraffin-embedded human spleen using Catalog No:111883(AMICA1

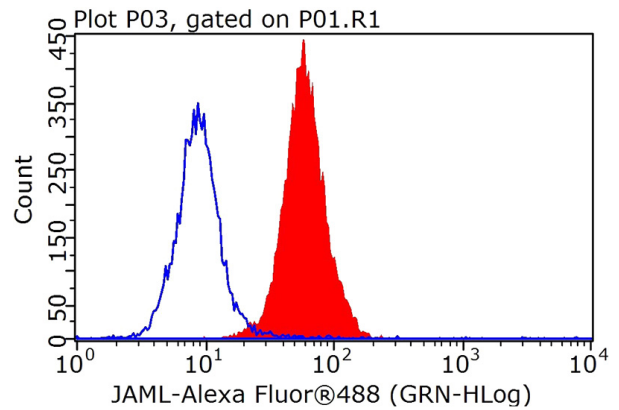
JAML antibody

Catalog Number: 111883

antibody) at dilution of 1:100 (under 40x lens)



Immunofluorescent analysis of HeLa cells, using AMICA1 antibody Catalog No:111883 at 1:25 dilution and Rhodamine-labeled goat anti-rabbit IgG (red).



1X10⁶ HeLa cells were stained with 0.2ug AMICA1 antibody (Catalog No:111883, red) and control antibody (blue). Fixed with 90% MeOH blocked with 3% BSA (30 min). FITC-Goat anti-Rabbit IgG with dilution 1:100.