

# Anti-ATF2 Rabbit antibody



Catalog Number: 167483

## Product name

Anti-ATF2 Rabbit antibody

## Specificity

Human

## Antibody description

ATF2 Rabbit polyclonal antibody

## Preparation

Antigen: A synthetic peptide of human ATF2

## Formulation

Supplied in 50nM Tris-Glycine(pH 7.4), 0.15M NaCl, 40%Glycerol, 0.01% sodium azide and 0.05% BSA.

## Storage

Store at -20°C. Stable for 12 months from date of receipt.

## Clonality

Polyclonal

## Ig Type

Rabbit IgG

## Applications

WB, ICC/IF, IP

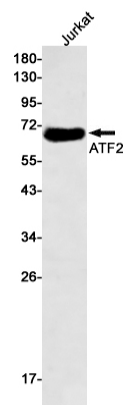
## Dilutions

WB: 1/2000

ICC/IF: 1/50

IP: 1/20

## Validations



Western blot detection of ATF2 in Jurkat cell lysates using ATF2 Rabbit pAb(1:500 diluted). Predicted band size:55kDa.Observed band size:70kDa.