

# RASSF6 antibody

Catalog Number: 114483

## Product name

RASSF6 antibody

WB: 1:1000-1:10000

IP: 1:200-1:2000

## Specificity

Human, Mouse, Rat; other species not tested.

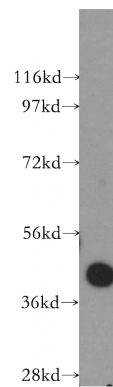
IHC: 1:20-1:200

IF: 1:10-1:100

## Antibody description

RASSF6 Rabbit Polyclonal antibody. Positive IF detected in Hela cells. Positive IHC detected in human ovary tumor tissue, human prostate cancer tissue. Positive WB detected in U-937 cells, COLO 320 cells, HeLa cells, HepG2 cells, PC-3 cells. Positive IP detected in HepG2 cells. Observed molecular weight by Western-blot: 43 kDa

## Validations



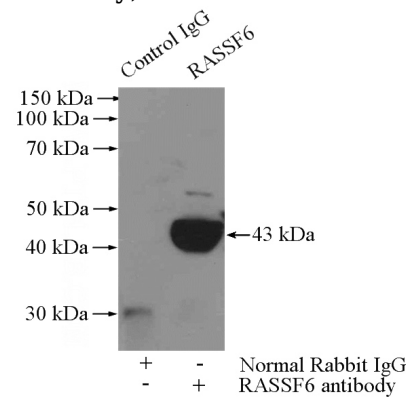
## Preparation

This antibody was obtained by immunization of RASSF6 recombinant protein (Accession Number: NM\_001270391). Purification method: Antigen affinity purified.

U-937 cells were subjected to SDS PAGE followed by western blot with Catalog No:114483(RASSF6 antibody) at dilution of 1:500

## Formulation

PBS with 0.1% sodium azide and 50% glycerol pH 7.3.



## Storage

Store at -20°C. DO NOT ALIQUOT

## Clonality

Polyclonal

## Ig Type

Rabbit IgG

## Applications

ELISA, WB, IHC, IF, IP

## Dilutions

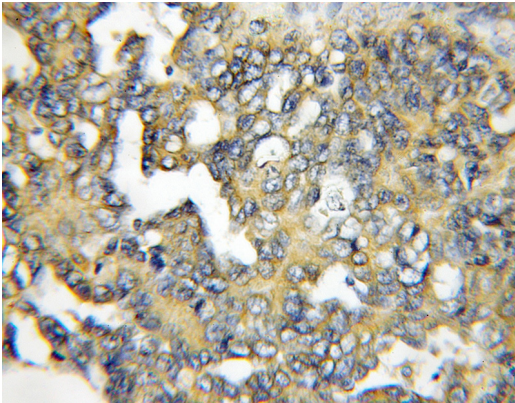
Recommended Dilution:

IP Result of anti-RASSF6 (IP:Catalog No:114483, 4ug; Detection:Catalog No:114483 1:500) with HepG2 cells lysate 2400ug.

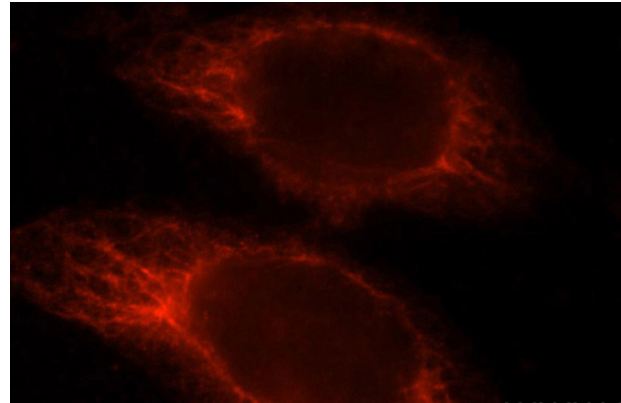
# RASSF6 antibody

Catalog Number: 114483

---



Immunohistochemical of paraffin-embedded human ovary tumor using Catalog No:114483(RASSF6 antibody) at dilution of 1:100 (under 10x lens)



Immunofluorescent analysis of HeLa cells, using RASSF6 antibody Catalog No:114483 at 1:25 dilution and Rhodamine-labeled goat anti-rabbit IgG (red).