

Product name

Anti-Gastric intrinsic factor / GIF antibody

Immunogen

[Human Gastric intrinsic factor / GIF \(His Tag\) recombinant protein](#)

Specificity

Human Gastric intrinsic factor / GIF

Antibody description

Rabbit monoclonal to Gastric intrinsic factor / GIF

Preparation

This antibody was obtained from a rabbit immunized with purified, recombinant Human Gastric intrinsic factor / GIF (rh Gastric intrinsic factor / GIF; P27352-1; Met1-Tyr417).

Formulation

0.2 µm filtered solution in PBS

Storage

This antibody can be stored at 2°C-8°C for one month without detectable loss of activity. Antibody products are stable for twelve months from date of receipt when stored at -20°C to -80°C.

Preservative-Free.

Sodium azide is recommended to avoid contamination (final concentration 0.05%-0.1%). It is toxic to cells and should be disposed of properly. Avoid repeated freeze-thaw cycles.

Clonality

Monoclonal

Ig Type

Rabbit IgG

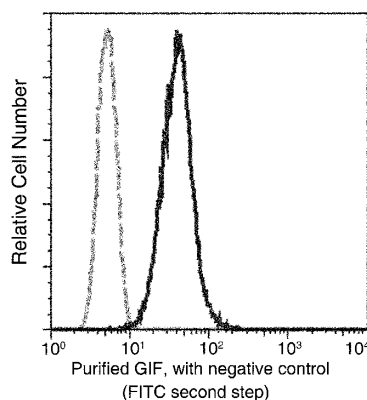
Applications

FCM

Dilutions

FCM: 0.5-2 µg/Test

Validations



Gastric intrinsic factor / GIF Antibody, Rabbit MAb, Flow Cytometry

Flow cytometric analysis of Human GIF expression on HeLa cells. The cells were treated according to manufacturer's manual (BD Pharmingen™ Cat. No. 554714), stained with purified anti-Human GIF, then a FITC-conjugated second step antibody. The fluorescence histograms were derived from gated events with the forward and side light-scatter characteristics of intact cells.