

# BCS1L antibody

Catalog Number: 107083

## Product name

BCS1L antibody

IHC: 1:20-1:200

IF: 1:20-1:200

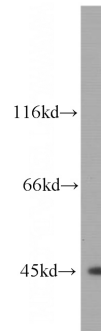
## Specificity

human, mouse; other species not tested.

## Validations

## Antibody description

BCS1L Mouse Monoclonal antibody. Positive IF detected in MCF-7. Positive IHC detected in human gliomas. Positive WB detected in Colo320 cells. Observed molecular weight by Western-blot: 47KD



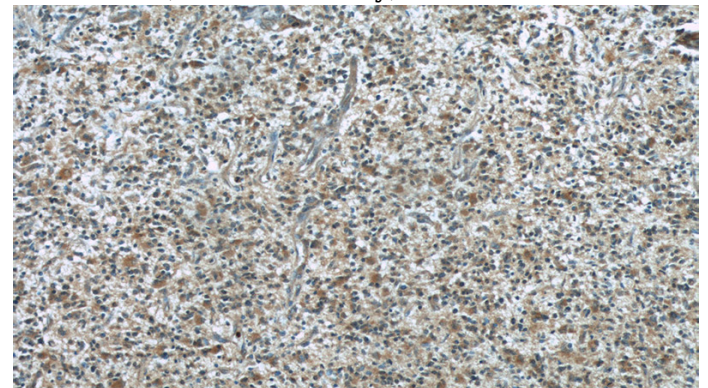
## Preparation

This antibody was obtained by immunization of BCS1L recombinant protein (Accession Number: NM\_001320717). Purification method: Protein G purified.

COLO 320 cells were subjected to SDS PAGE followed by western blot with Catalog No:107083(BCS1L antibody) at dilution of 1:1000

## Formulation

PBS with 0.02% sodium azide and 50% glycerol pH 7.3.



## Storage

Store at -20°C. DO NOT ALIQUOT

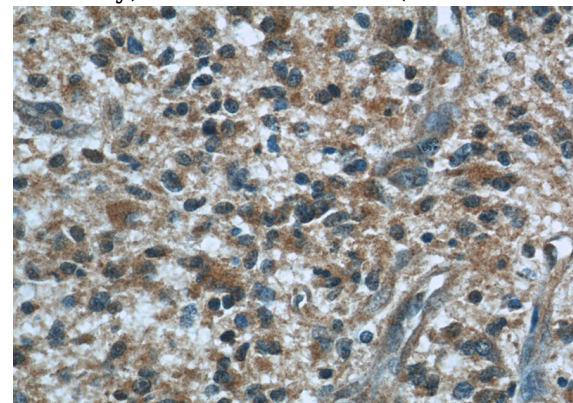
## Clonality

Monoclonal

Immunohistochemical of paraffin-embedded human gliomas using Catalog No:107083(BCS1L antibody) at dilution of 1:50 (under 10x lens)

## Ig Type

Mouse IgG1



## Applications

ELISA, WB, IHC, IF

## Dilutions

Recommended Dilution:

WB: 1:500-1:5000

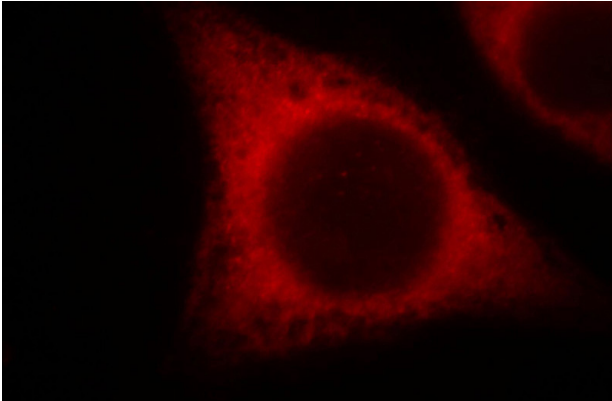
Immunohistochemical of paraffin-embedded human gliomas using Catalog No:107083(BCS1L antibody) at dilution of 1:50 (under 10x lens)

# BCS1L antibody

Catalog Number: 107083

---

antibody) at dilution of 1:50 (under 40x lens)



Immunofluorescent analysis of MCF-7 cells, using BCS1L antibody Catalog No: at 1:50 dilution and Rhodamine-labeled goat anti-mouse IgG (red).