

SEC6 antibody

Catalog Number: 115083

Product name

SEC6 antibody

IHC: 1:20-1:200

IF: 1:20-1:200

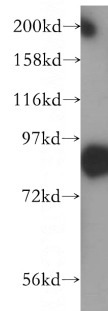
Specificity

Human, Mouse, Rat; other species not tested.

Antibody description

SEC6 Rabbit Polyclonal antibody. Positive IF detected in HepG2 cells. Positive IHC detected in human gliomas tissue. Positive WB detected in human brain tissue, COLO 320 cells, HeLa cells, HepG2 cells. Observed molecular weight by Western-blot: 86 kDa

Validations



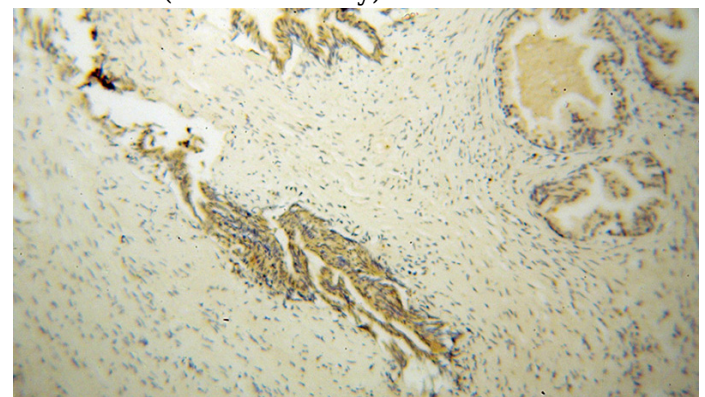
Preparation

This antibody was obtained by immunization of SEC6 recombinant protein (Accession Number: XM_017009003). Purification method: Antigen affinity purified.

human brain tissue were subjected to SDS PAGE followed by western blot with Catalog No:115083(SEC6 antibody) at dilution of 1:86

Formulation

PBS with 0.02% sodium azide and 50% glycerol pH 7.3.



Storage

Store at -20°C. DO NOT ALIQUOT

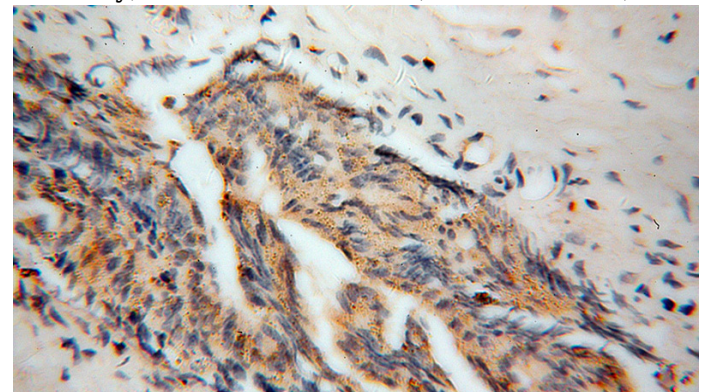
Clonality

Polyclonal

Immunohistochemical of paraffin-embedded human gliomas using Catalog No:115083(SEC6 antibody) at dilution of 1:100 (under 10x lens)

Ig Type

Rabbit IgG



Applications

ELISA, WB, IHC, IF

Dilutions

Recommended Dilution:

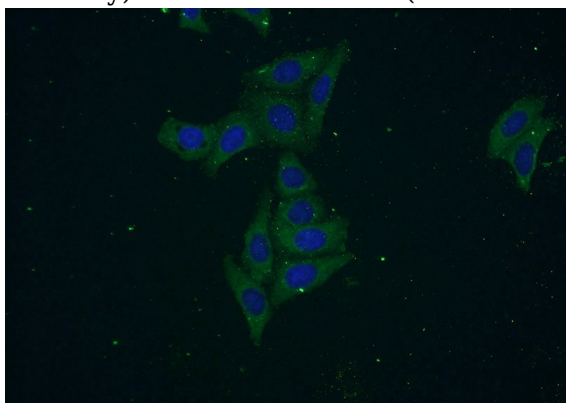
WB: 1:500-1:5000

Immunohistochemical of paraffin-embedded human gliomas using Catalog No:115083(SEC6

SEC6 antibody

Catalog Number: 115083

antibody) at dilution of 1:100 (under 40x lens)



Immunofluorescent analysis of HepG2 cells using Catalog No:115083(SEC6 Antibody) at dilution of 1:50 and Alexa Fluor 488-conjugated AffiniPure Goat Anti-Rabbit IgG(H+L)