

Product name

GLYATL1 antibody

Specificity

human, mouse; other species not tested.

Antibody description

GLYATL1 Rabbit Polyclonal antibody. Positive WB detected in human liver tissue, mouse liver tissue. Positive IHC detected in human ovary tumor. Observed molecular weight by Western-blot: 35kd

Preparation

This antibody was obtained by immunization of GLYATL1 recombinant protein (Accession Number: NM_001389715). Purification method: Antigen affinity purified.

Formulation

PBS with 0.02% sodium azide and 50% glycerol pH 7.3.

Storage

Store at -20°C. DO NOT ALIQUOT

Clonality

Polyclonal

Ig Type

Rabbit IgG

Applications

ELISA, WB, IHC

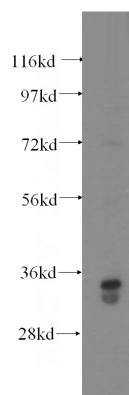
Dilutions

Recommended Dilution:

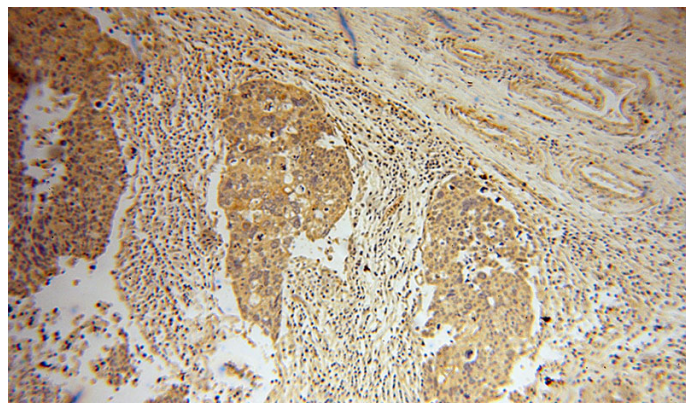
WB: 1:500-1:5000

IHC: 1:20-1:200

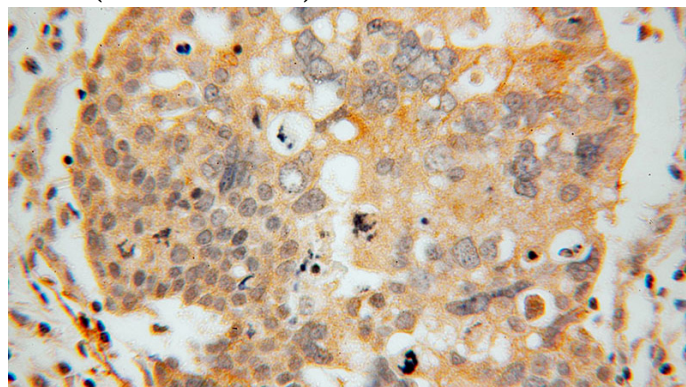
Validations



human liver tissue were subjected to SDS PAGE followed by western blot with Catalog No:111083(GLYATL1 antibody) at dilution of 1:500



Immunohistochemical of paraffin-embedded human ovary tumor using Catalog No:111083(GLYATL1 antibody) at dilution of 1:100 (under 10x lens)



Immunohistochemical of paraffin-embedded human ovary tumor using Catalog No:111083(GLYATL1 antibody) at dilution of 1:100 (under 40x lens)