

# ADAP2 antibody



Catalog Number: 107773

## Product name

ADAP2 antibody

## Specificity

human, mouse, rat; other species not tested.

## Antibody description

ADAP2 Rabbit Polyclonal antibody. Positive IHC detected in human spleen. Positive WB detected in human placenta tissue. Observed molecular weight by Western-blot: 44kd

## Preparation

This antibody was obtained by immunization of ADAP2 recombinant protein (Accession Number: NM\_001346714). Purification method: Antigen affinity purified.

## Formulation

PBS with 0.02% sodium azide and 50% glycerol pH 7.3.

## Storage

Store at -20°C. DO NOT ALIQUOT

## Clonality

Polyclonal

## Ig Type

Rabbit IgG

## Applications

ELISA, WB, IHC

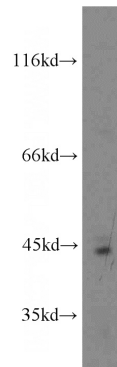
## Dilutions

Recommended Dilution:

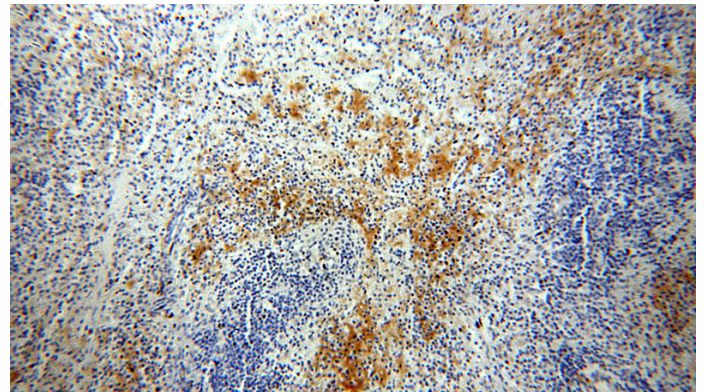
WB: 1:200-1:1000

IHC: 1:20-1:200

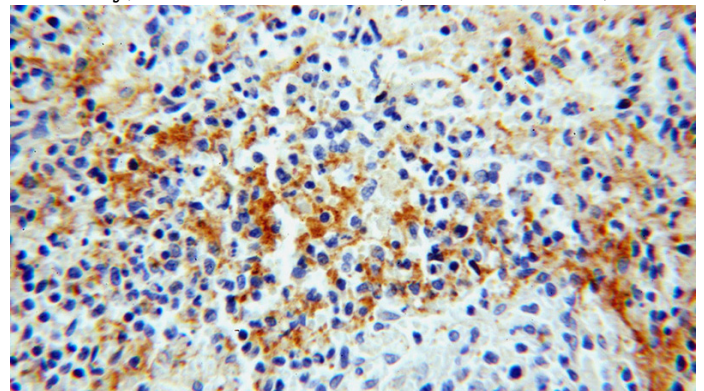
## Validations



human placenta tissue were subjected to SDS PAGE followed by western blot with Catalog No:107773(ADAP2 antibody) at dilution of 1:200



Immunohistochemical of paraffin-embedded human spleen using Catalog No:107773(ADAP2 antibody) at dilution of 1:50 (under 10x lens)



Immunohistochemical of paraffin-embedded human spleen using Catalog No:107773(ADAP2 antibody) at dilution of 1:50 (under 40x lens)