

# Anti-Phospho-Histone H3 (Ser10) Rabbit antibody



Catalog Number: 166773

## Product name

Anti-Phospho-Histone H3 (Ser10) Rabbit antibody

## Specificity

Human

## Antibody description

Phospho-Histone H3 (Ser10) Rabbit polyclonal antibody

## Preparation

Antigen: Human Phospho-Histone H3(Ser10) synthetic peptide conjugated to KLH.

## Formulation

PBS(pH 7.4) containing with 0.03% Proclin300 and 50% glycerol.

## Storage

Store at 4°C short term. Store at -20°C long term. Avoid freeze / thaw cycle.

## Clonality

Polyclonal

## Ig Type

Rabbit IgG

## Applications

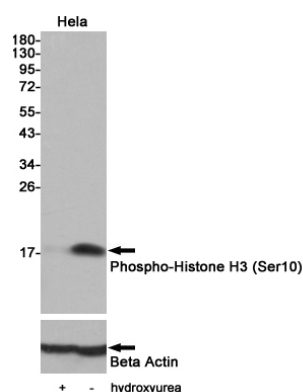
WB, ICC/IF

## Dilutions

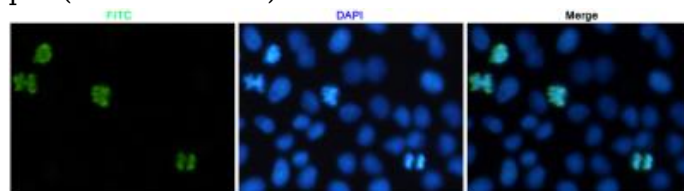
WB: 1/1000

;ICC: 1/200

## Validations



Western blot analysis of extracts from HeLa cells, untreated or 1mM hydroxyurea treated for 5 hours, using Phospho-Histone H3(Ser10) Rabbit pAb(1:1000 diluted).



Immunofluorescent analysis of HeLa cells labeled with Phospho-Histone H3(Ser10) (dilution 1:200) Rabbit pAb. DAPI was used to stain nucleus(blue).