

Anti-VPS72 antibody



Catalog Number: 176373

Product name

Rabbit IgG

Anti-VPS72 antibody

Applications

Specificity

WB, IHC-P, IF

Human, Mouse

Dilutions

Antibody description

WB: 1:500-1:2000

Rabbit polyclonal antibody to VPS72

IHC-P: 1:100-1:300

Preparation

IF: 1:100-1:500

This antigen of this antibody was the antiserum was produced against synthesized peptide derived from human vps72. aa range:131-180

Validations

Formulation

Liquid, Liquid in PBS containing 50% glycerol, 0.5% BSA and 0.02% sodium azide.

Storage

Store at +4°C after thawing. Aliquot store at -20°C or -80°C. Avoid repeated freeze / thaw cycles.

Clonality

Polyclonal

Ig Type

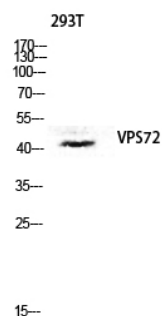


Fig1.; Western blot analysis of 293T lysis using VPS72 antibody. Antibody was diluted at 1:1000. Secondary antibody (catalog#: HA1001) was diluted at 1:20000 cells nucleus extracted by Minute TM Cytoplasmic and Nuclear Fractionation kit (SC-003, Invent biotech, MN, USA).