

SLC38A1 antibody

Catalog Number: 115373

Product name

SLC38A1 antibody

IP: 1:200-1:2000

IHC: 1:20-1:200

Specificity

Human, Mouse, Rat; other species not tested.

Antibody description

SLC38A1 Rabbit Polyclonal antibody. Positive IHC detected in human prostate cancer tissue. Positive IP detected in mouse brain tissue. Positive WB detected in human brain tissue, human kidney tissue, Jurkat cells. Observed molecular weight by Western-blot: 60-65 kDa

Preparation

This antibody was obtained by immunization of SLC38A1 recombinant protein (Accession Number: XM_047429598). Purification method: Antigen affinity purified.

Formulation

PBS with 0.1% sodium azide and 50% glycerol pH 7.3.

Storage

Store at -20°C. DO NOT ALIQUOT

Clonality

Polyclonal

Ig Type

Rabbit IgG

Applications

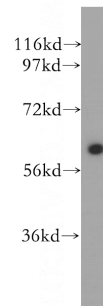
ELISA, WB, IHC, IP

Dilutions

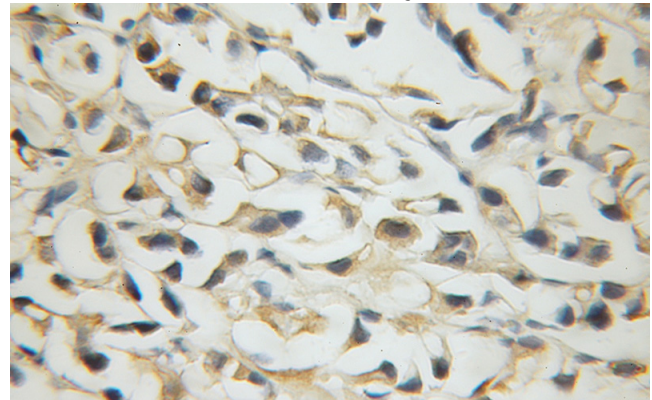
Recommended Dilution:

WB: 1:200-1:2000

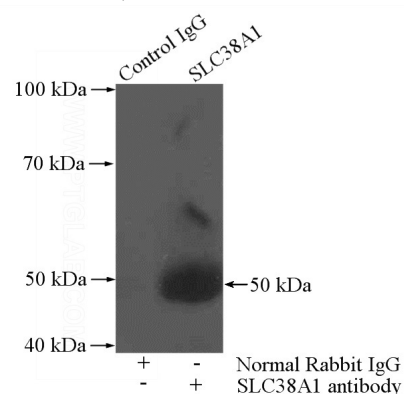
Validations



human brain tissue were subjected to SDS PAGE followed by western blot with Catalog No:115373(SLC38A1 antibody) at dilution of 1:500



Immunohistochemical of paraffin-embedded human prostate cancer using Catalog No:115373(SLC38A1 antibody) at dilution of 1:50 (under 40x lens)



IP Result of anti-SLC38A1 (IP:Catalog No:115373,

SLC38A1 antibody



Catalog Number: 115373

4ug; Detection:Catalog No:115373 1:500) with mouse brain tissue lysate 4000ug.