

# ERP29 antibody



Catalog Number: 110373

## Product name

ERP29 antibody

## Specificity

Human, Mouse, Rat; other species not tested.

## Antibody description

ERP29 Rabbit Polyclonal antibody. Positive IF detected in HeLa cells. Positive IHC detected in human liver tissue, human pancreas tissue. Positive WB detected in mouse liver tissue, HEK-293 cells, mouse kidney tissue, mouse lung tissue. Positive IP detected in mouse liver tissue. Observed molecular weight by Western-blot: 29 kDa

## Preparation

This antibody was obtained by immunization of ERP29 recombinant protein (Accession Number: NM\_006817). Purification method: Antigen affinity purified.

## Formulation

PBS with 0.1% sodium azide and 50% glycerol pH 7.3.

## Storage

Store at -20°C. DO NOT ALIQUOT

## Clonality

Polyclonal

## Ig Type

Rabbit IgG

## Applications

ELISA, WB, IHC, IF, IP

## Dilutions

Recommended Dilution:

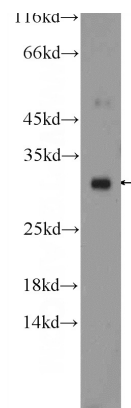
WB: 1:500-1:5000

IP: 1:500-1:5000

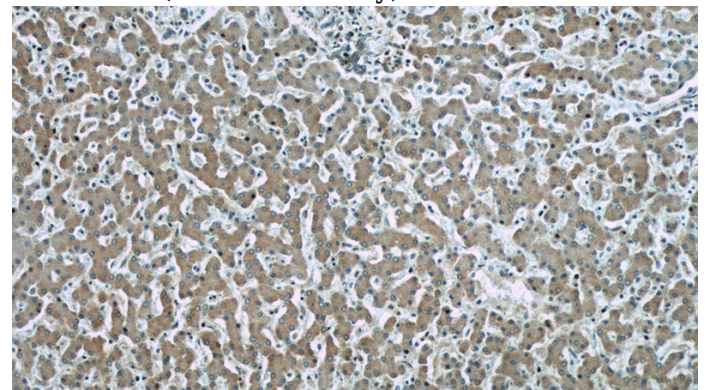
IHC: 1:20-1:200

IF: 1:10-1:100

## Validations



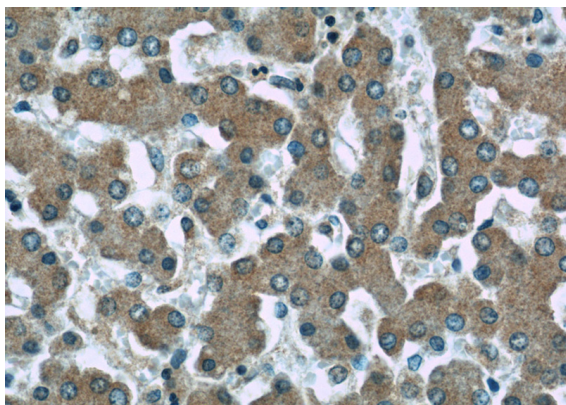
mouse liver tissue were subjected to SDS PAGE followed by western blot with Catalog No:110373(ERP29 Antibody) at dilution of 1:1000



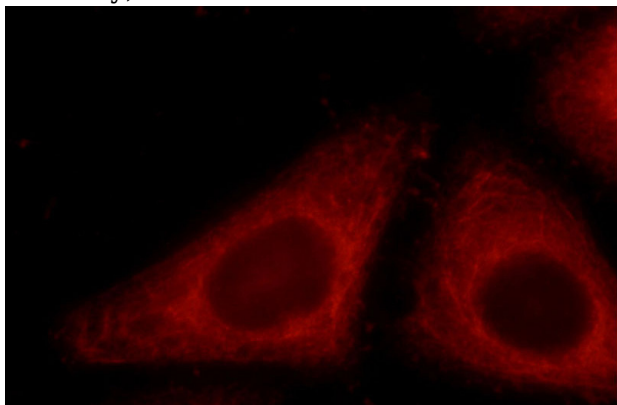
Immunohistochemistry of paraffin-embedded human liver slide using Catalog No:110373(ERP29 Antibody) at dilution of 1:50

# ERP29 antibody

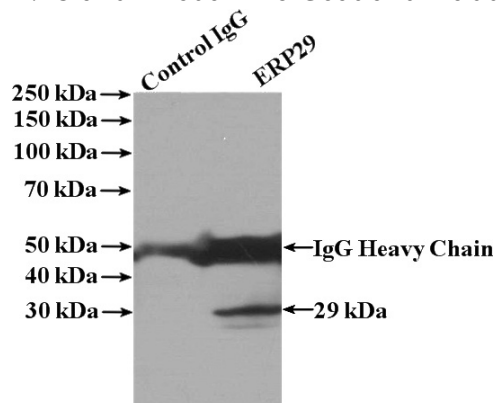
Catalog Number: 110373



Immunohistochemistry of paraffin-embedded human liver slide using Catalog No:110373(ERP29 Antibody) at dilution of 1:50



Immunofluorescent analysis of HeLa cells using Catalog No:110373(ERP29 Antibody) at dilution of 1:25 and Rhodamine-Goat anti-Rabbit IgG



IP Result of anti-ERP29 (IP:Catalog No:110373, 4ug; Detection:Catalog No:110373 1:1000) with mouse liver tissue lysate 4000ug.