

# Anti-IGHA1 antibody



Catalog Number: 176673

## Product name

Anti-IGHA1 antibody

## Specificity

Human

## Antibody description

Mouse monoclonal antibody to IGHA1

## Preparation

This antigen of this antibody was native protein

## Formulation

Liquid, 1\*PBS (pH7.4), 0.2% BSA, 40% Glycerol.  
Preservative: 0.05% Sodium Azide.

## Storage

Store at +4°C after thawing. Aliquot store at -20°C or -80°C. Avoid repeated freeze / thaw cycles.

## Clonality

Monoclonal

## Ig Type

Mouse IgG1

## Applications

WB, ELISA

## Dilutions

WB: 1:500-1:2000

ELISA: Use at an assay dependent concentration.

## Validations

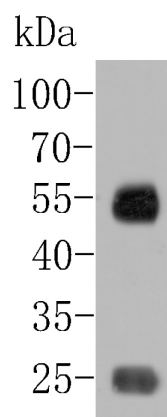


Fig1.; Western blot analysis of IgA on human plasma tissue lysates. Proteins were transferred to a PVDF membrane and blocked with 5% BSA in PBS for 1 hour at room temperature. The primary antibody ( 1/500) was used in 5% BSA at room temperature for 2 hours. Goat Anti-Mouse IgG - HRP Secondary Antibody (HA1006) at 1:5,000 dilution was used for 1 hour at room temperature.