

Anti-Chk1 Rabbit antibody

Catalog Number: 166673

Product name

Anti-Chk1 Rabbit antibody

Specificity

Human, Mouse, Rat

Antibody description

Chk1 Rabbit polyclonal antibody

Preparation

Antigen: A synthesized peptide derived from human Chk1

Formulation

Rabbit IgG in phosphate buffered saline , pH 7.4, 150mM NaCl, 0.02% sodium azide and 50% glycerol.

Storage

Store at 4°C short term. Store at -20°C long term. Avoid freeze / thaw cycle.

Clonality

Polyclonal

Ig Type

Rabbit IgG

Applications

WB, ICC/IF, IP

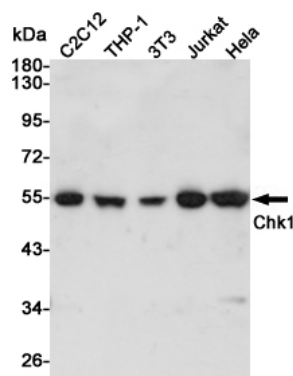
Dilutions

WB: 1/500-1/2000

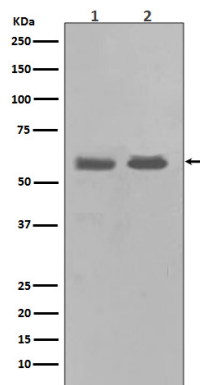
ICC/IF: 1/50-1/200

IP: 1/30

Validations



Western blot analysis of Chk1 expression in C2C12, THP-1, 3T3, Jurkat and HeLa cell lysates using Chk1 antibody at 1/1000 dilution. Predicted band size: 54 kDa. Observed band size: 54 kDa.



Western blot analysis of Chk1 in (1) K562 cell lysate; (2) PC-12 cell lysate.