

Anti-ATP1B3 antibody



Catalog Number: 142673

Product name

Anti-ATP1B3 antibody

Specificity

Mouse Na,K-ATPase 3 subunit / ATP1B3

Antibody description

Rabbit Polyclonal to Mouse ATP1B3

Preparation

Produced in rabbits immunized with a synthetic peptide corresponding to the center region of the Mouse Na,K-ATPase 3 subunit / ATP1B3, and purified by antigen affinity chromatography.

Formulation

0.2 µm filtered solution in PBS

Storage

This antibody can be stored at 2°C-8°C for one month without detectable loss of activity. Antibody products are stable for twelve months from date of receipt when stored at -20°C to -80°C.

Preservative-Free.

Sodium azide is recommended to avoid contamination (final concentration 0.05%-0.1%). It is toxic to cells and should be disposed of properly. Avoid repeated freeze-thaw cycles.

Clonality

Polyclonal

Ig Type

Rabbit IgG

Applications

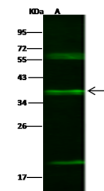
WB, IHC-P

Dilutions

WB: 5-20 µg/ml

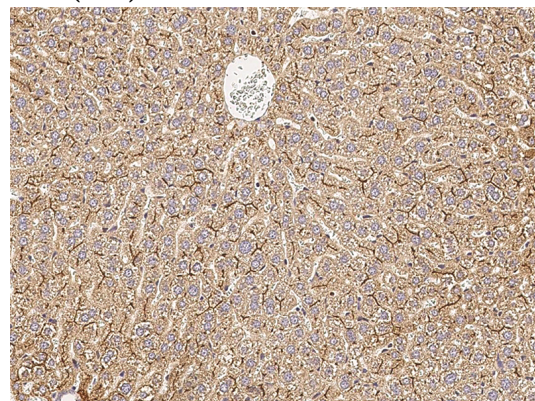
IHC-P: 0.1-2 µg/mL

Validations



Items	Lanes	A
Sample (whole cell lysate)		NCI-H460
Sample Volume (µg/lane)		30
Gel		13% SDS-PAGE reducing gel
Recommended Concentration		5-20 µg/ml
Secondary Antibody		Dylight 800-labeled Antibody To Rabbit IgG (H+L), at 1:5000 dilution.
Explanation		Developed using Odyssey imaging system. Predicted band size : 32 kDa Observed band size : 32 kDa Additional bands at : 19 kDa and 58kDa (We are unsure as to the identity of these extra bands.)

Mouse Na,K-ATPase 3 subunit/ATP1B3 Western blot (WB) 14666



Mouse Na,K-ATPase 3 subunit/ATP1B3 Immunohistochemistry(IHC) 14667