

FKBP2 antibody

Catalog Number: 110673

Product name

FKBP2 antibody

Specificity

Human, Mouse, Rat; other species not tested.

Antibody description

FKBP2 Rabbit Polyclonal antibody. Positive WB detected in mouse cerebellum tissue, MCF7 cells. Positive IHC detected in human prostate cancer tissue. Observed molecular weight by Western-blot: 16kd

Preparation

This antibody was obtained by immunization of FKBP2 recombinant protein (Accession Number: NM_001370363). Purification method: Antigen affinity purified.

Formulation

PBS with 0.1% sodium azide and 50% glycerol pH 7.3.

Storage

Store at -20°C. DO NOT ALIQUOT

Clonality

Polyclonal

Ig Type

Rabbit IgG

Applications

ELISA, IHC, WB

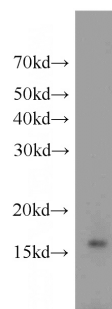
Dilutions

Recommended Dilution:

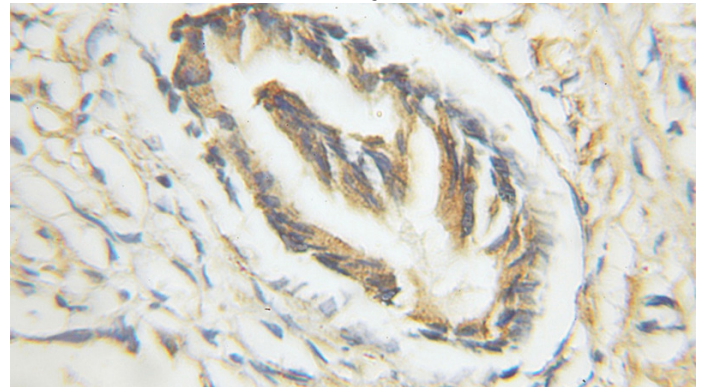
WB: 1:200-1:2000

IHC: 1:20-1:200

Validations



mouse cerebellum tissue were subjected to SDS PAGE followed by western blot with Catalog No:110673(FKBP2 antibody) at dilution of 1:500



Immunohistochemical of paraffin-embedded human prostate cancer using Catalog No:110673(FKBP2 antibody) at dilution of 1:50 (under 10x lens)