

Human Cathepsin B/CTSB (His Tag) recombinant protein



Catalog Number: 500673

General Information

Protein Construction

A DNA sequence encoding the pre pro form of human CTSB (Arg18-Ile339) (NP_001899.1) was expressed with a C-terminal polyhistidine tag.

Organism

Human

Expression Host

Human Cells

QC Testing

Activity

Measured by its ability to cleave the fluorogenic peptide substrate Z-LR-AMC (R&D Systems, Catalog # ES008). The specific activity is >2,500 pmoles/min/ μ g.

Purity

> 97 % as determined by SDS-PAGE

Endotoxin

< 1.0 EU per μ g of the protein as determined by the LAL method

Stability

Samples are stable for up to twelve months from date of receipt at -70°C

Predicted N terminal

Arg 18 & Phe 74

Molecular Mass

The recombinant human CTSB existing as the proform consists of 332 amino acids and has a predicted molecular mass of 37.2 kDa. rhCTSB migrates with the molecular weight of 36 and 43 kDa as the proform and mature form respectively in SDS-PAGE under reducing conditions.

Formulation

Lyophilized from sterile PBS, pH 7.4

1. 5 % trehalose and mannitol are added as protectants before lyophilization.

2. Please contact us for any concerns or special requirements.

Usage Guide

Storage

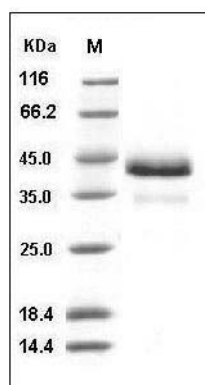
Store it under sterile conditions at -20°C to -80°C.

It is recommended that the protein be aliquoted for optimal storage. Avoid repeated freeze-thaw cycles.

Reconstitution

Adding sterile water, prepare a stock solution of 0.25 mg/ml. Concentration is measured by UV-Vis.

SDS-PAGE



Human Cathepsin B / CTSB Protein (His Tag) SDS-PAGE