

CHPF N-terminal antibody



Catalog Number: 109273

Product name

CHPF N-terminal antibody

WB: 1:500-1:5000

IHC: 1:20-1:200

Specificity

Human, Mouse, Rat; other species not tested.

Antibody description

CHPF N-terminal Rabbit Polyclonal antibody. Positive IHC detected in human colon cancer tissue, human colon tissue, human heart tissue. Positive WB detected in human placenta tissue, C6 cells, mouse skeletal muscle tissue. Observed molecular weight by Western-blot: 85-90 kDa, 65-70 kDa

Preparation

This antibody was obtained by immunization of CHPF N-terminal recombinant protein (Accession Number: NM_024536). Purification method: Antigen Affinity purified.

Formulation

PBS with 0.02% sodium azide and 50% glycerol pH 7.3.

Storage

Store at -20°C. DO NOT ALIQUOT

Clonality

Polyclonal

Ig Type

Rabbit IgG

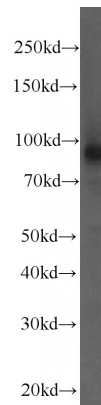
Applications

ELISA, WB, IHC

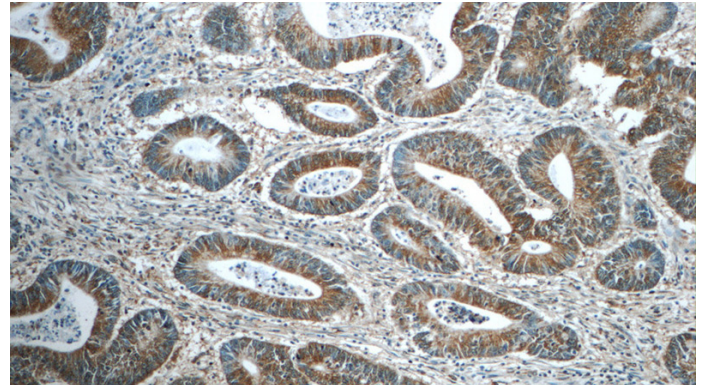
Dilutions

Recommended Dilution:

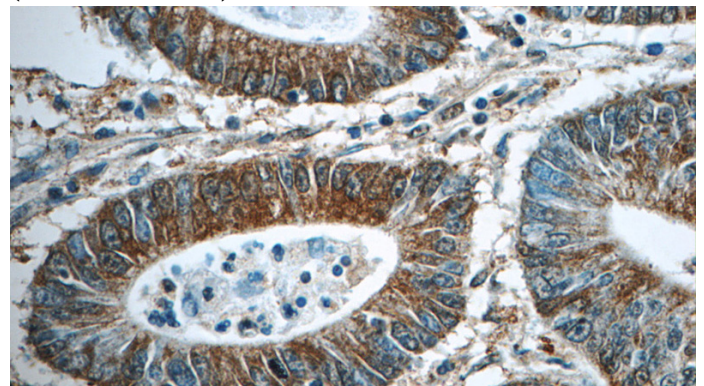
Validations



human placenta tissue were subjected to SDS PAGE followed by western blot with Catalog No:109273(CHPF antibody) at dilution of 1:1000



Immunohistochemistry of paraffin-embedded human colon cancer tissue slide using Catalog No:109273(CHPF Antibody) at dilution of 1:50 (under 10x lens)



Immunohistochemistry of paraffin-embedded

CHPF N-terminal antibody



Catalog Number: 109273

human colon cancer tissue slide using Catalog

No:109273(CHPF Antibody) at dilution of 1:50
(under 40x lens)