

# ZXDC antibody



Catalog Number: 117273

## Product name

ZXDC antibody

## Specificity

Human, Mouse; other species not tested.

## Antibody description

ZXDC Rabbit Polyclonal antibody. Positive WB detected in human kidney tissue, A431 cells, HEK-293 cells, mouse kidney tissue. Positive IF detected in Hela cells. Observed molecular weight by Western-blot: 70-75 kDa

## Preparation

This antibody was obtained by immunization of ZXDC recombinant protein (Accession Number: BC002940). Purification method: Antigen affinity purified.

## Formulation

PBS with 0.02% sodium azide and 50% glycerol pH 7.3.

## Storage

Store at -20°C. DO NOT ALIQUOT

## Clonality

Polyclonal

## Ig Type

Rabbit IgG

## Applications

ELISA, WB, IF

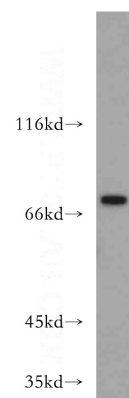
## Dilutions

Recommended Dilution:

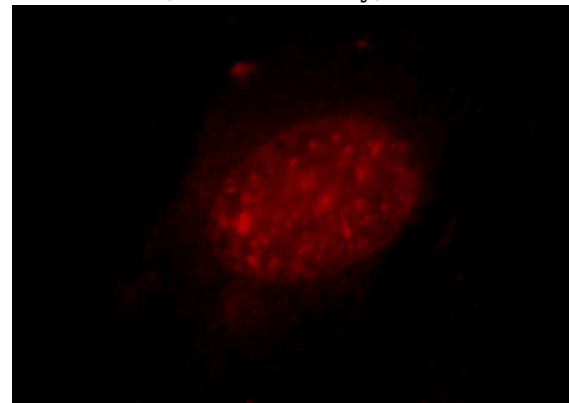
WB: 1:200-1:2000

IF: 1:10-1:100

## Validations



human kidney tissue were subjected to SDS PAGE followed by western blot with Catalog No:117273(ZXDC antibody) at dilution of 1:300



Immunofluorescent analysis of Hela cells, using ZXDC antibody Catalog No:117273 at 1:25 dilution and Rhodamine-labeled goat anti-rabbit IgG (red).