

SHH antibody

Catalog Number: 115273

Product name

SHH antibody

WB: 1:200-1:2000

IP: 1:200-1:2000

Specificity

Human, Mouse, Rat; other species not tested.

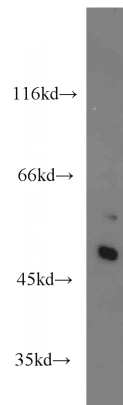
IHC: 1:20-1:200

IF: 1:10-1:100

Antibody description

SHH Rabbit Polyclonal antibody. Positive WB detected in mouse liver tissue, rat kidney tissue. Positive IP detected in mouse liver tissue. Positive FC detected in HepG2 cells. Positive IHC detected in mouse kidney tissue, human liver cancer tissue, mouse liver tissue. Positive IF detected in HepG2 cells. Observed molecular weight by Western-blot: 50 kDa

Validations



Preparation

This antibody was obtained by immunization of Peptide (Accession Number: NM_000193). Purification method: Antigen affinity purified.

mouse liver tissue were subjected to SDS PAGE followed by western blot with Catalog No:115273(SHH antibody) at dilution of 1:800

Formulation

PBS with 0.02% sodium azide and 50% glycerol pH 7.3.

Storage

Store at -20°C. DO NOT ALIQUOT

Clonality

Polyclonal

Ig Type

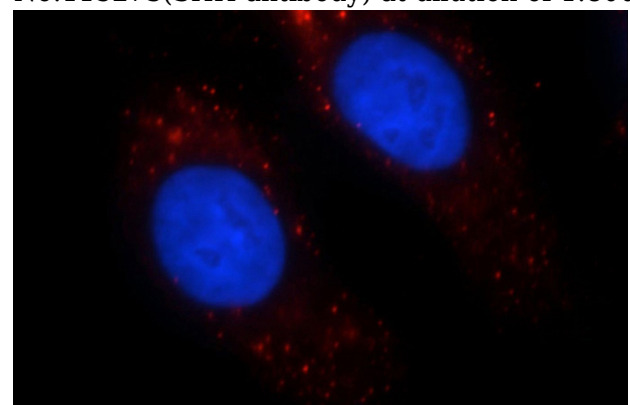
Rabbit IgG

Applications

ELISA, WB, IF, IHC, IP, FC

Dilutions

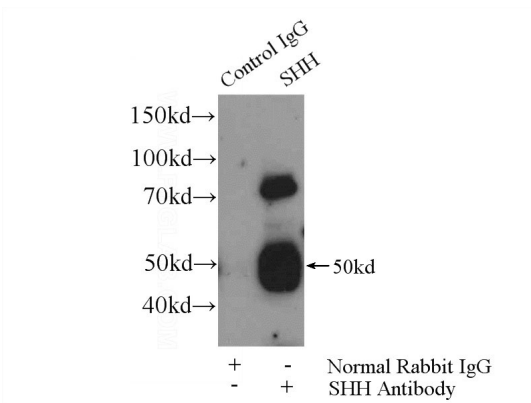
Recommended Dilution:



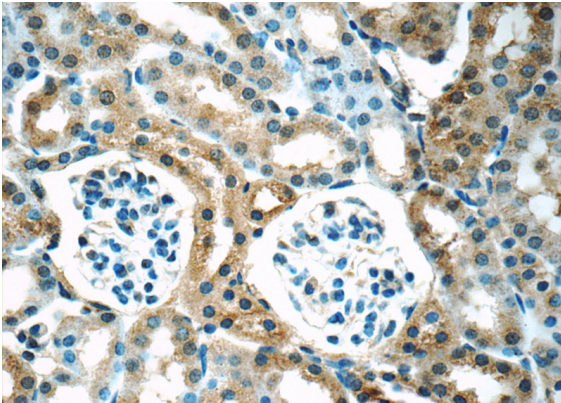
Immunofluorescent analysis of HepG2 cells, using SHH antibody Catalog No:115273 at 1:25 dilution and Rhodamine-labeled goat anti-rabbit IgG (red). Blue pseudocolor = DAPI (fluorescent DNA dye).

SHH antibody

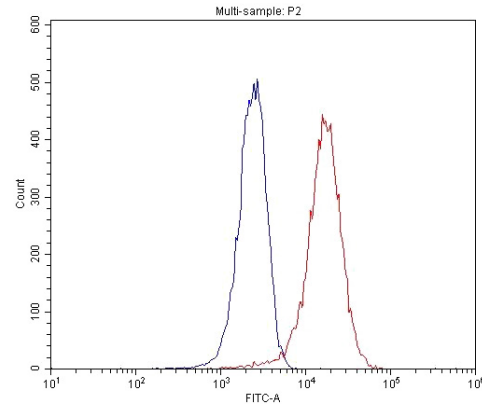
Catalog Number: 115273



IP Result of anti-SHH (IP:Catalog No:115273, 4ug; Detection:Catalog No:115273 1:500) with mouse liver tissue lysate 6400ug.



Immunohistochemistry of paraffin-embedded mouse kidney tissue slide using Catalog No:115273(SHH Antibody) at dilution of 1:50 (under 40x lens)



1X10⁶ HepG2 cells were stained with 0.2ug SHH antibody (Catalog No:115273, red) and control antibody (blue). Fixed with 4% PFA blocked with 3% BSA (30 min). Alexa Fluor 488-conjugated AffiniPure Goat Anti-Rabbit IgG(H+L) with dilution 1:1500.