

Lamin A/C antibody



Catalog Number: 112273

Product name

Lamin A/C antibody

Specificity

Human, Mouse, Rat; other species not tested.

Antibody description

Lamin A/C Rabbit Polyclonal antibody. Positive FC detected in HEK-293T cells. Positive IF detected in HepG2 cells. Positive IP detected in A375 cells. Positive WB detected in NIH/3T3 cells, A375 cells, C6 cells, HEK-293 cells, HeLa cells, mouse heart tissue, mouse ovary tissue, SKOV-3 cells. Observed molecular weight by Western-blot: 65 kDa, 70 kDa

Preparation

This antibody was obtained by immunization of Lamin A/C recombinant protein (Accession Number: NM_001406992). Purification method: Antigen affinity purified.

Formulation

PBS with 0.1% sodium azide and 50% glycerol pH 7.3.

Storage

Store at -20°C. DO NOT ALIQUOT

Clonality

Polyclonal

Ig Type

Rabbit IgG

Applications

ELISA, IP, FC, IF, WB

Dilutions

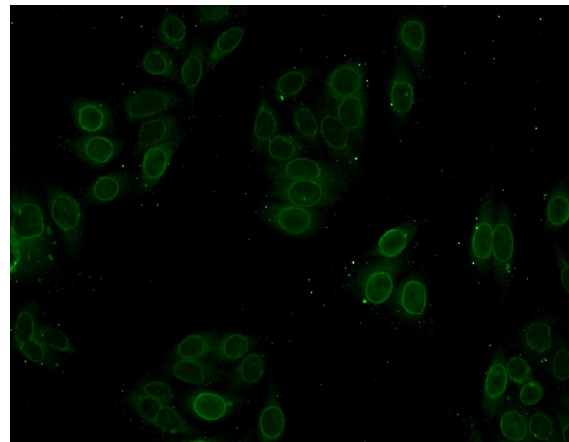
Recommended Dilution:

WB: 1:1000-1:10000

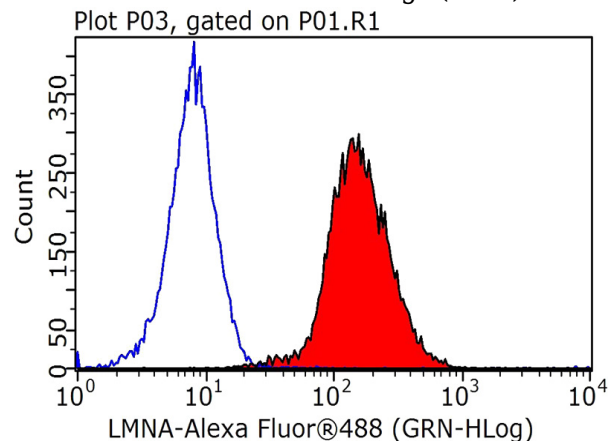
IP: 1:500-1:5000

IF: 1:20-1:200

Validations



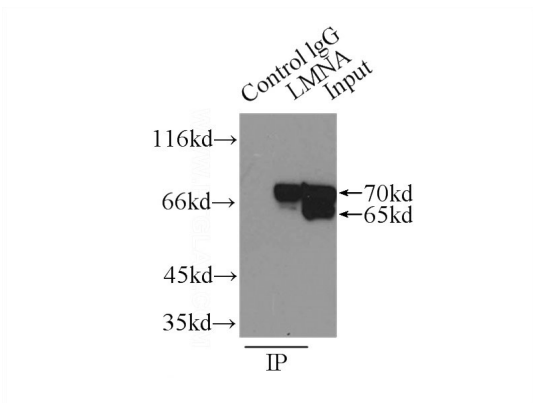
Immunofluorescent analysis of HepG2 cells using Catalog No:117327(Lamin A/C Antibody) at dilution of 1:50 and Alexa Fluor 488-conjugated AffiniPure Goat Anti-Rabbit IgG(H+L)



1X10⁶ HEK-293T cells were stained with 0.2ug Lamin A/C antibody (Catalog No:117327, red) and control antibody (blue). Fixed with 90% MeOH blocked with 3% BSA (30 min). Alexa Fluor 488-conjugated AffiniPure Goat Anti-Rabbit IgG(H+L) with dilution 1:1000.

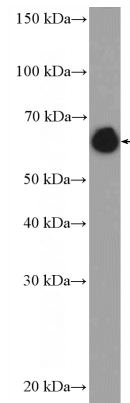
Lamin A/C antibody

Catalog Number: 112273



IP Result of anti-lamin-A (IP:Catalog No:117327, 3ug; Detection:Catalog No:117327 1:1000) with

A375 cells lysate 800ug.



NIH/3T3 cells were subjected to SDS PAGE followed by western blot with Catalog No:117327(Lamin A/C Antibody) at dilution of 1:3000