

# Anti-CDC42 Rabbit antibody



Catalog Number: 168973

## Product name

Anti-CDC42 Rabbit antibody

## Specificity

Human, Mouse, Rat

## Antibody description

CDC42 Rabbit monoclonal antibody

## Preparation

Antigen: Recombinant protein of human CDC42

## Formulation

Supplied in 50nM Tris-Glycine(pH 7.4), 0.15M NaCl, 40%Glycerol, 0.01% sodium azide and 0.05% BSA.

## Storage

Store at 4°C short term. Aliquot and store at -20°C long term. Avoid freeze / thaw cycle.

## Clonality

Monoclonal

## Ig Type

Rabbit IgG

## Applications

FC, ICC/IF, WB

## Dilutions

WB: 1/2000-1/10000

WB: 1/2000-1/10000

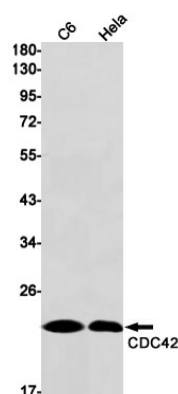
IHC: 1/20

ICC/IF: 1/20

FC: 1/50

IP: 1/20

## Validations



Western blot detection of CDC42 in C6,HeLa cell lysates using CDC42 Rabbit mAb(1:1000 diluted).Predicted band size:21kDa.Observed band size:21kDa.