

Anti-ERK2 / MAPK1 / MAPK2 antibody



Catalog Number: 105973

Product name

Anti-ERK2 / MAPK1 / MAPK2 antibody

Immunogen

[Mouse ERK2 / MAPK1 / MAPK2 \(His & GST Tag\) recombinant protein](#)

Specificity

Mouse ERK2 / MAPK1 / MAPK2

Antibody description

Rabbit polyclonal to ERK2 / MAPK1 / MAPK2

Preparation

Produced in rabbits immunized with purified, recombinant Mouse ERK2 / MAPK1 / MAPK2 (rh ERK2 / MAPK1 / MAPK2; P63085; Met1-Ser358). ERK2 / MAPK1 / MAPK2 specific IgG was purified by Mouse ERK2 / MAPK1 / MAPK2 affinity chromatography.

Formulation

0.2 µm filtered solution in PBS

Storage

This antibody can be stored at 2°C-8°C for one month without detectable loss of activity. Antibody products are stable for twelve months from date of receipt when stored at -20°C to -80°C.

Preservative-Free.

Sodium azide is recommended to avoid contamination (final concentration 0.05%-0.1%). It is toxic to cells and should be disposed of

properly. Avoid repeated freeze-thaw cycles.

Clonality

Polyclonal

Ig Type

Rabbit IgG

Applications

ELISA, WB

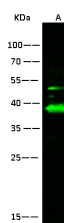
Dilutions

WB: 5-10 µg/ml

ELISA:0.1-0.2 µg/mL

This antibody can be used at 0.1-0.2 µg/mL with the appropriate secondary reagents to detect Mouse ERK2 / MAPK1 / MAPK2. The detection limit for Mouse ERK2 / MAPK1 / MAPK2 is 0.00975 ng/well.

Validations



Items	Lanes	A
Sample (whole cell lysate)		293T
Sample Volume (µg/lane)		30
Gel		13% SDS-PAGE reducing gel
Recommended Concentration		5-10 µg/ml
Secondary Antibody		Dylight 800-labeled Antibody To Rabbit IgG (H+L), at 1:5000 dilution.

ERK2 / MAPK1 / MAPK2 Antibody, Rabbit PAb, Antigen Affinity Purified, Western blot