

Mouse CD22 (Fc Tag) recombinant protein



Catalog Number: 503973

General Information

Protein Construction

A DNA sequence encoding the mouse CD22 (BAE33829.1)(Met1-Arg708) was expressed with the Fc region of human IgG1 at the C-terminus.

Organism

Mouse

Expression Host

Human Cells

QC Testing

Purity

> 95 % as determined by SDS-PAGE

Endotoxin

< 1.0 EU per μ g of the protein as determined by the LAL method

Stability

Samples are stable for up to twelve months from date of receipt at -70°C

Predicted N terminal

Arg 19

Molecular Mass

The recombinant mouse CD22/Fc is a disulfide-linked homodimer. The reduced monomer comprises 931 amino acids and has a predicted molecular mass of 104.3 kDa. The apparent

molecular mass of the protein is approximately 125 kDa in SDS-PAGE under reducing conditions.

Formulation

Lyophilized from sterile PBS, pH 7.4.

1. 5 % trehalose and mannitol are added as protectants before lyophilization.
2. Please contact us for any concerns or special requirements.

Usage Guide

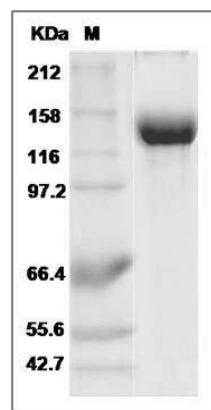
Storage

Store it under sterile conditions at -20°C to -80°C. It is recommended that the protein be aliquoted for optimal storage. Avoid repeated freeze-thaw cycles.

Reconstitution

Adding sterile water, prepare a stock solution of 0.25 mg/ml. Concentration is measured by UV-Vis.

SDS-PAGE



Mouse Siglec-2 / CD22 Protein (Fc Tag) SDS-PAGE