

PANX1 antibody

Catalog Number: 113573

Product name

PANX1 antibody

IP: 1:200-1:1000

IHC: 1:20-1:200

Specificity

Human; other species not tested.

Antibody description

PANX1 Rabbit Polyclonal antibody. Positive IP detected in HeLa cells. Positive WB detected in human brain tissue, HeLa cells. Positive IHC detected in human kidney tissue. Observed molecular weight by Western-blot: 48kd,98kd

Preparation

This antibody was obtained by immunization of PANX1 recombinant protein (Accession Number: NM_015368). Purification method: Antigen affinity purified.

Formulation

PBS with 0.02% sodium azide and 50% glycerol pH 7.3.

Storage

Store at -20°C. DO NOT ALIQUOT

Clonality

Polyclonal

Ig Type

Rabbit IgG

Applications

ELISA, IP, IHC, WB

Dilutions

Recommended Dilution:

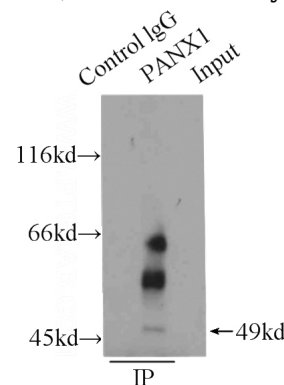
WB: 1:200-1:2000

Validations

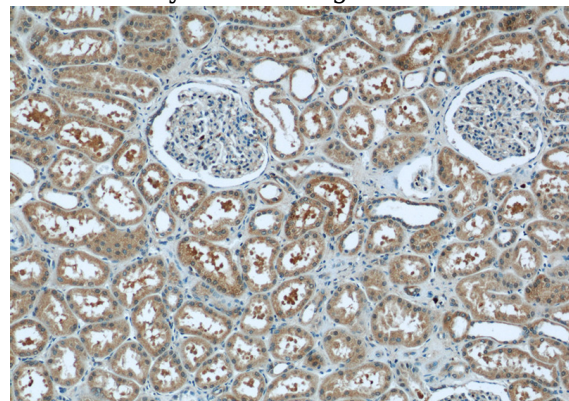
116kd→
66kd→
45kd→
35kd→
25kd→
18kd→
14kd→



human brain tissue were subjected to SDS PAGE followed by western blot with Catalog No:113573(PANX1 antibody) at dilution of 1:500



IP Result of anti-PANX1 (IP:Catalog No:113573, 3ug; Detection:Catalog No:113573 1:400) with HeLa cells lysate 2000ug.

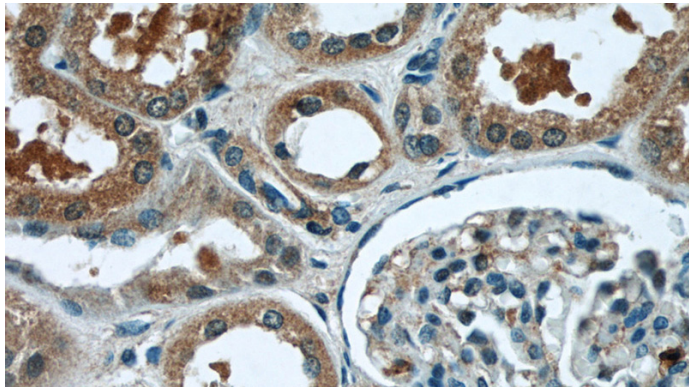


Immunohistochemistry of paraffin-embedded human kidney tissue slide using Catalog

PANX1 antibody

Catalog Number: 113573

No:113573(PANX1 Antibody) at dilution of 1:50
(under 10x lens)



Immunohistochemistry of paraffin-embedded
human kidney tissue slide using Catalog
No:113573(PANX1 Antibody) at dilution of 1:50
(under 40x lens)