

# Mouse 14-3-3 epsilon/YWHAE (GST Tag) recombinant protein



Catalog Number: 502573

## General Information

### Protein Construction

A DNA sequence encoding the mouse YWHAE (P62259) (Met 1-Gln 255) was fused with the GST tag at the N-terminus.

### Organism

Mouse

### Expression Host

E. coli

## QC Testing

### Purity

> 90 % as determined by SDS-PAGE

### Endotoxin

Please contact us for more information.

### Stability

Samples are stable for up to twelve months from date of receipt at -70°C

### Predicted N terminal

Met

### Molecular Mass

The recombinant mouse YWHAE/GST chimera consists of 487 amino acids and has a predicted molecular mass of 56.1 kDa. It migrates as an approximately 48 kDa band in SDS-PAGE under

reducing conditions.

### Formulation

Lyophilized from sterile 50mM Tris, 2mM GSH, 1mM DTT, pH 8.2

1. 5 % trehalose and mannitol are added as protectants before lyophilization.
2. Please contact us for any concerns or special requirements.

## Usage Guide

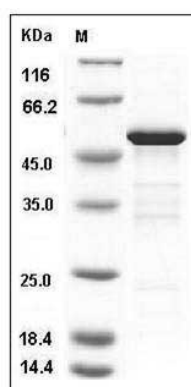
### Storage

Store it under sterile conditions at -20°C to -80°C. It is recommended that the protein be aliquoted for optimal storage. Avoid repeated freeze-thaw cycles.

### Reconstitution

Adding sterile water, prepare a stock solution of 0.25 mg/ml. Concentration is measured by UV-Vis.

### SDS-PAGE



Mouse 14-3-3 epsilon / YWHAE Protein (GST Tag)  
SDS-PAGE