

HSPA1L antibody



Catalog Number: 111573

Product name

HSPA1L antibody

Specificity

Human, Mouse, Rat; other species not tested.

Antibody description

HSPA1L Rabbit Polyclonal antibody. Positive IP detected in HepG2 cells. Positive WB detected in mouse liver tissue, HeLa cells, HepG2 cells, MCF7 cells, rat testis tissue. Positive IF detected in HepG2 cells. Positive IHC detected in human endometrial cancer tissue, human breast cancer tissue. Observed molecular weight by Western-blot: 70 kDa

Preparation

This antibody was obtained by immunization of HSPA1L recombinant protein (Accession Number: NM_005527). Purification method: Antigen affinity purified.

Formulation

PBS with 0.02% sodium azide and 50% glycerol pH 7.3.

Storage

Store at -20°C. DO NOT ALIQUOT

Clonality

Polyclonal

Ig Type

Rabbit IgG

Applications

ELISA, IHC, IF, WB, IP

Dilutions

Recommended Dilution:

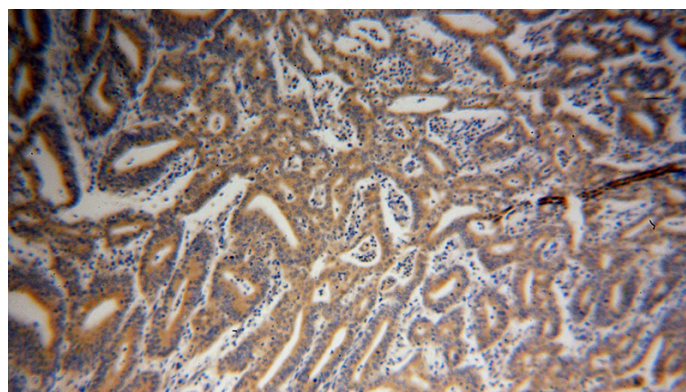
WB: 1:500-1:5000

IP: 1:500-1:5000

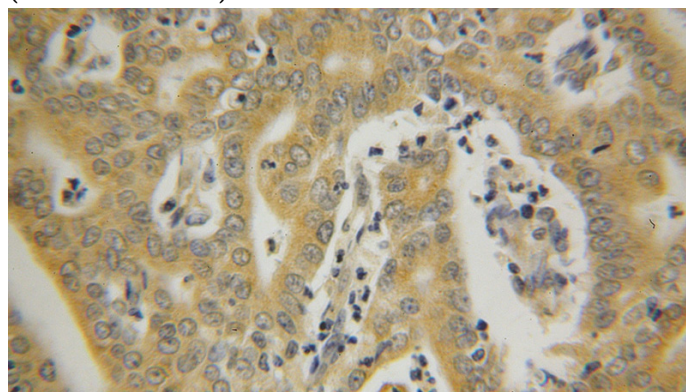
IHC: 1:20-1:200

IF: 1:10-1:100

Validations



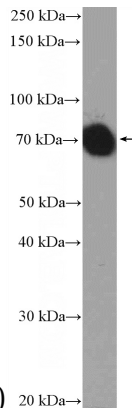
Immunohistochemical of paraffin-embedded human endometrial cancer using Catalog No:111573(HSPA1L antibody) at dilution of 1:100 (under 10x lens)



Immunohistochemical of paraffin-embedded human endometrial cancer using Catalog No:111573(HSPA1L antibody) at dilution of 1:100

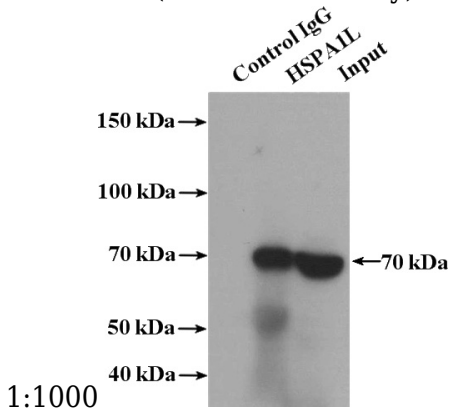
HSPA1L antibody

Catalog Number: 111573

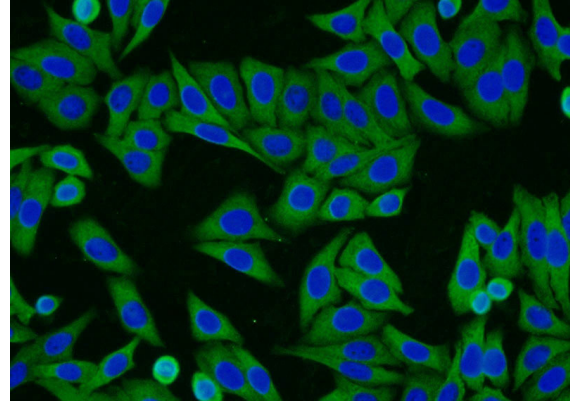


(under 40x lens)

mouse liver tissue were subjected to SDS PAGE followed by western blot with Catalog No:111573(HSPA1L Antibody) at dilution of



IP Result of anti-HSPA1L (IP:Catalog No:111573, 4ug; Detection:Catalog No:111573 1:1000) with HepG2 cells lysate 1800ug.



Immunofluorescent analysis of HepG2 cells using Catalog No:111573(HSPA1L Antibody) at dilution of 1:25 and Alexa Fluor 594-conjugated AffiniPure Goat Anti-Rabbit IgG(H+L)