

# CPT1A antibody

Catalog Number: 107173

## Product name

CPT1A antibody

IP: 1:200-1:2000

IHC: 1:20-1:200

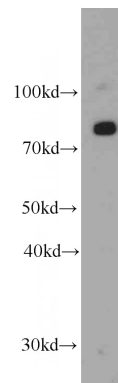
## Specificity

Human, Mouse, Rat; other species not tested.

## Validations

## Antibody description

CPT1A Mouse Monoclonal antibody. Positive IHC detected in human heart tissue, human liver tissue. Positive WB detected in lo2 cells, MCF7 cells. Positive IP detected in MCF-7 cells. Observed molecular weight by Western-blot: 86kD



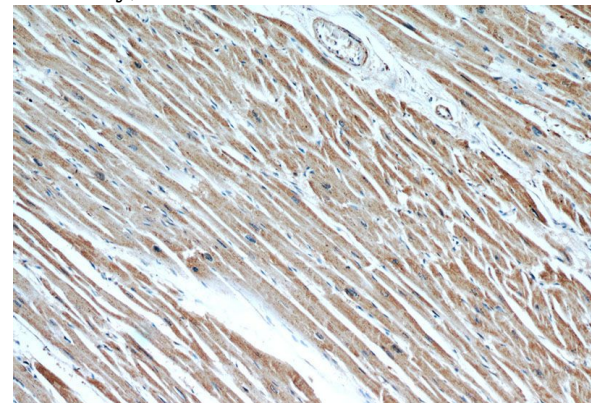
## Preparation

This antibody was obtained by immunization of CPT1A recombinant protein (Accession Number: NM\_001031847). Purification method: Protein A purified.

L02 cells were subjected to SDS PAGE followed by western blot with Catalog No:107173(CPT1A antibody) at dilution of 1:500

## Formulation

PBS with 0.02% sodium azide and 50% glycerol pH 7.3.



## Storage

Store at -20°C. DO NOT ALIQUOT

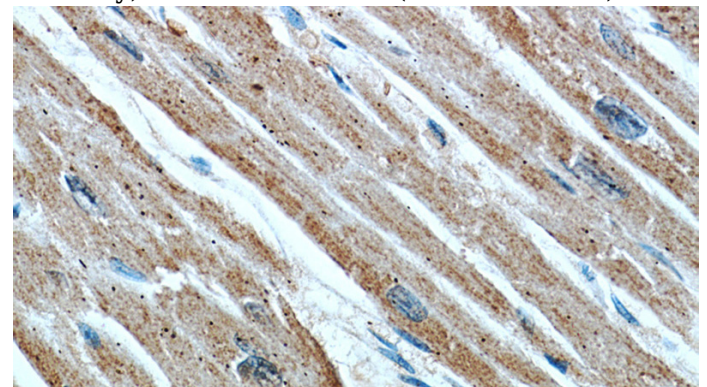
## Clonality

Monoclonal

Immunohistochemical of paraffin-embedded human heart using Catalog No:107173(CPT1A antibody) at dilution of 1:50 (under 10x lens)

## Ig Type

Mouse IgG2a



## Applications

ELISA, WB, IHC, IP

## Dilutions

Recommended Dilution:

WB: 1:200-1:2000

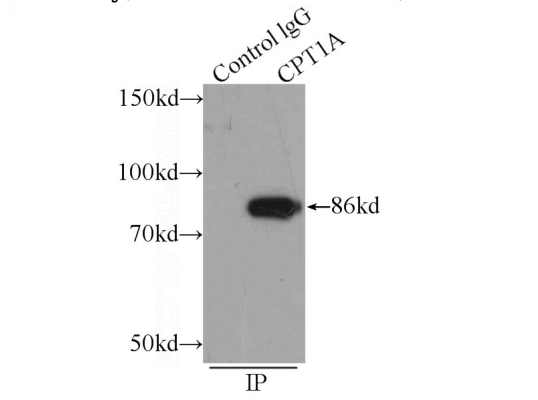
Immunohistochemical of paraffin-embedded human heart using Catalog No:107173(CPT1A

# CPT1A antibody

Catalog Number: 107173

---

antibody) at dilution of 1:50 (under 40x lens)



IP Result of anti-CPT1A (IP:Catalog No:107173, 4ug; Detection:Catalog No:107173 1:500) with MCF-7 cells lysate 1200ug.