

# Human Pin1 (His Tag) recombinant protein



Catalog Number: 503173

## General Information

### Gene Name Synonym

Peptidyl-prolyl cis-trans isomerase Pin1; Rotamase Pin1

### Protein Construction

A DNA sequence encoding the mature form of human PIN1 (Q13526-1) (Met 1-Glu 163) was expressed, with a polyhistidine tag at the N-terminus.

### Organism

Human

### Expression Host

E. coli

## QC Testing

### Purity

> 90 % as determined by SDS-PAGE

### Endotoxin

Please contact us for more information.

### Stability

Samples are stable for up to twelve months from date of receipt at -70°C

### Predicted N terminal

Met

### Molecular Mass

The recombinant human PIN1 consisting of 179 amino acids and has a calculated molecular mass of 20.3 kDa. It migrates as an 21 kDa band in SDS-PAGE under reducing conditions as predicted.

### Formulation

Lyophilized from sterile PBS, pH 7.4

1. 5 % trehalose and mannitol are added as protectants before lyophilization.

2. Please contact us for any concerns or special requirements.

## Usage Guide

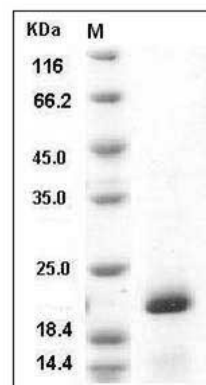
### Storage

Store it under sterile conditions at -20°C to -80°C. It is recommended that the protein be aliquoted for optimal storage. Avoid repeated freeze-thaw cycles.

### Reconstitution

Adding sterile water, prepare a stock solution of 0.25 mg/ml. Concentration is measured by UV-Vis.

### SDS-PAGE



Human PIN1 / Rotamase Pin1 Protein (His Tag)  
SDS-PAGE