

# Human NTPDase 2 / ENTPD2 (aa 29-460, His Tag) recombinant protein



Catalog Number: 502173

## General Information

### Gene Name Synonym

CD39 antigen-like 1; Ecto-ATP diphosphohydrolase 2

### Protein Construction

A DNA sequence encoding the mature form of human ENTPD2 (Q9Y5L3) (Thr29-Asp460) was expressed, with a polyhistidine tag at the N-terminus.

### Organism

Human

### Expression Host

Baculovirus-Insect Cells

## QC Testing

### Activity

Measured by its ability to hydrolyze the 5'phosphategroups from the substrate adenosine 5'triphosphate(ATP).

The specific activity is > 5,000 pmoles/min/ $\mu$ g.

### Purity

> 85 % as determined by SDS-PAGE

### Endotoxin

< 1.0 EU per  $\mu$ g of the protein as determined by the LAL method

### Stability

Samples are stable for up to twelve months from date of receipt at -70°C

### Predicted N terminal

His

## Molecular Mass

The recombinant human human ENTPD2 consists of 448 amino acids and predicts a molecular mass of 49.3 KDa. It migrates as an approximately 59 KDa band in SDS-PAGE under reducing conditions.

## Formulation

Lyophilized from sterile 20mM Tris, 500mM NaCl, pH 7.4

1. 5 % trehalose and mannitol are added as protectants before lyophilization.

2. Please contact us for any concerns or special requirements.

## Usage Guide

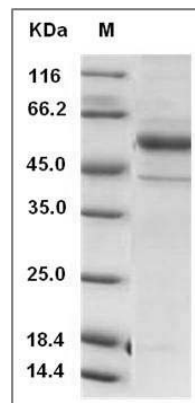
### Storage

Store it under sterile conditions at -20°C to -80°C. It is recommended that the protein be aliquoted for optimal storage. Avoid repeated freeze-thaw cycles.

### Reconstitution

Adding sterile water, prepare a stock solution of 0.25 mg/ml. Concentration is measured by UV-Vis.

## SDS-PAGE



Human NTPDase 2 / ENTPD2 Protein (aa 29-460, His Tag) SDS-PAGE