

# GSNOR,ADH5 antibody



Catalog Number: 111173

## Product name

GSNOR,ADH5 antibody

## Immunogen

[Human GSNOR,ADH5 Recombinant protein \(GST tag\)](#)

## Specificity

Human,Mouse,Rat; other species not tested.

## Antibody description

GSNOR,ADH5 Rabbit Polyclonal antibody. Positive FC detected in HepG2 cells. Positive IHC detected in human liver tissue, human endometrial cancer tissue, human pancreas cancer tissue, human testis tissue. Positive IF detected in HepG2 cells. Positive IP detected in mouse liver tissue. Positive WB detected in mouse liver tissue, human brain tissue, human liver tissue, human testis tissue, mouse brain tissue, mouse heart tissue. Observed molecular weight by Western-blot: 40 kDa

## Preparation

This antibody was obtained by immunization of GSNOR,ADH5 recombinant protein (Accession Number: NM\_000671). Purification method: Antigen affinity purified.

## Formulation

PBS with 0.02% sodium azide and 50% glycerol pH 7.3.

## Storage

Store at -20°C. DO NOT ALIQUOT

## Clonality

Polyclonal

## Ig Type

Rabbit IgG

## Applications

ELISA, WB, IHC, IP, IF, FC

## Dilutions

Recommended Dilution:

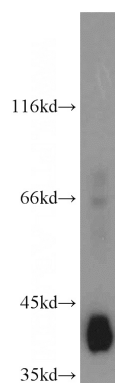
WB: 1:200-1:2000

IP: 1:200-1:2000

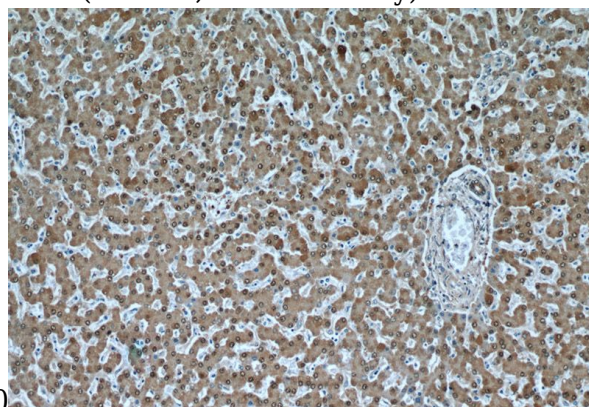
IHC: 1:20-1:200

IF: 1:20-1:200

## Validations



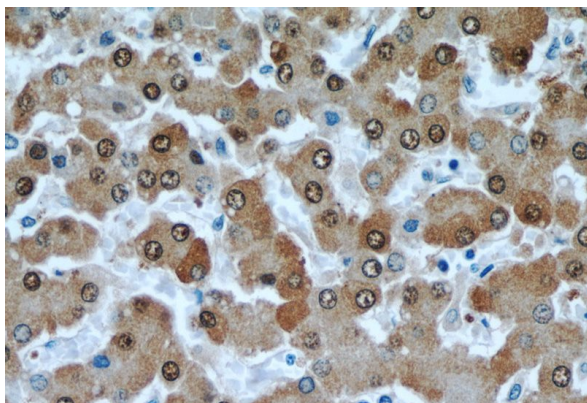
mouse liver tissue were subjected to SDS PAGE followed by western blot with Catalog No:111173(GSNOR,ADH5 antibody) at dilution of



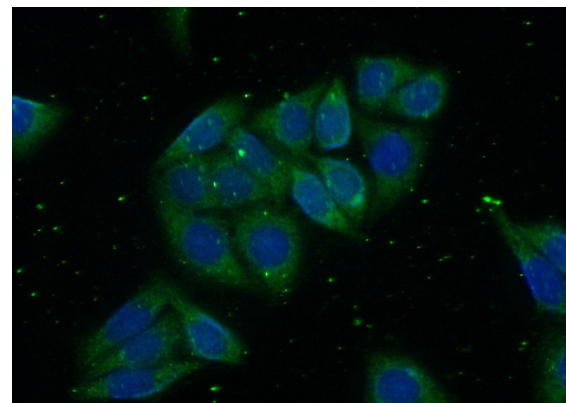
Immunohistochemical of paraffin-embedded human liver using Catalog No:111173(GSNOR,ADH5 antibody) at dilution of 1:50 (under 10x lens)

# GSNOR,ADH5 antibody

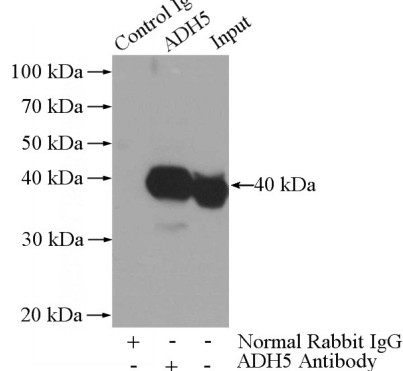
Catalog Number: 111173



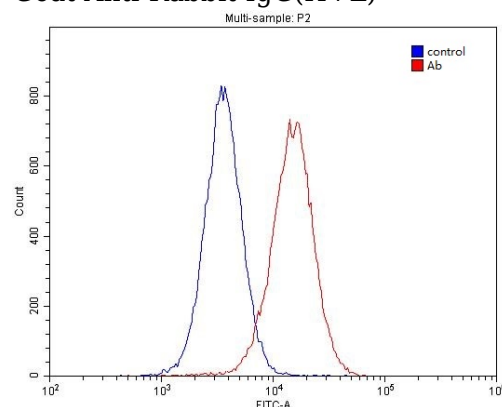
Immunohistochemical of paraffin-embedded human liver using Catalog No:111173(GSNOR,ADH5 antibody) at dilution of 1:50 (under 40x lens)



Immunofluorescent analysis of (-20oc Ethanol) fixed HepG2 cells using Catalog No:111173(GSNOR,ADH5 Antibody) at dilution of 1:100 and Alexa Fluor 488-conjugated AffiniPure Goat Anti-Rabbit IgG(H+L)



IP Result of anti-GSNOR,ADH5 (IP:Catalog No:111173, 3ug; Detection:Catalog No:111173 1:800) with mouse liver tissue lysate 4000ug.



1X10<sup>6</sup> HepG2 cells were stained with 0.2ug GSNOR,ADH5 antibody (Catalog No:111173, red) and control antibody (blue). Fixed with 4% PFA blocked with 3% BSA (30 min). Alexa Fluor 488-conjugated AffiniPure Goat Anti-Rabbit IgG(H+L) with dilution 1:1500.