

Anti-IDH2 Rabbit antibody



Catalog Number: 168873

Product name

Anti-IDH2 Rabbit antibody

Specificity

Human, Mouse, Rat

Antibody description

IDH2 Rabbit monoclonal antibody

Preparation

Antigen: A synthetic peptide of human IDH2

Formulation

50nM Tris-Glycine(pH 7.4), 0.15M NaCl, 40%Glycerol, 0.01% sodium azide and 0.05% BSA.

Storage

Store at 4°C short term. Store at -20°C long term. Avoid freeze / thaw cycle.

Clonality

Monoclonal

Ig Type

Rabbit IgG

Applications

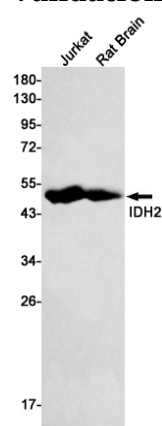
WB, FC

Dilutions

WB: 1/1000-1/5000

FC: 1/20-1/100

Validations



Western blot detection of IDH2 in Jurkat,Rat Brain lysates using IDH2 Rabbit mAb(1:500 diluted).Predicted band size:51 kDa.Observed band size:43kDa.