

General Information

Protein Construction

A DNA sequence encoding the canine NRG1 isoform alpha (XP_858147.1) extracellular domain (Ser19-Lys240) was expressed with five amino acids (DDDDK) at the C- terminus.

Organism

Canine

Expression Host

Human Cells

QC Testing

Activity

Measured by its binding ability in a functional ELISA.

Immobilized canine NRG1 at 10 µg/ml (100 µl/well) can bind human ErbB4-Fc (Cat:502640), The EC₅₀ of human ErbB4-Fc (Cat:502640) is 0.19-0.43 µg/ml.

Purity

> 95 % as determined by SDS-PAGE

Endotoxin

< 1.0 EU per µg of the protein as determined by the LAL method

Stability

Samples are stable for up to twelve months from date of receipt at -70°C

Predicted N terminal

Ser 19

Molecular Mass

The recombinant canine NRG1 comprises 228 amino acids and has a predicted molecular mass of 24.7 kDa. The apparent molecular mass of the protein is approximately 47 kDa in SDS-PAGE under reducing conditions due to glycosylation.

Formulation

Lyophilized from sterile PBS, pH 7.4.

1. 5 % trehalose and mannitol are added as protectants before lyophilization.

2. Please contact us for any concerns or special requirements.

Usage Guide

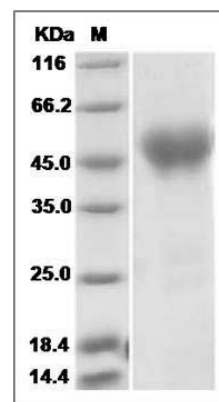
Storage

Store it under sterile conditions at -20°C to -80°C. It is recommended that the protein be aliquoted for optimal storage. Avoid repeated freeze-thaw cycles.

Reconstitution

Adding sterile water, prepare a stock solution of 0.25 mg/ml. Concentration is measured by UV-Vis.

SDS-PAGE



Canine NRG1-alpha Protein () SDS-PAGE