

# MSL3 antibody



Catalog Number: 112873

## Product name

MSL3 antibody

## Specificity

Human, Mouse, Rat; other species not tested.

## Antibody description

MSL3 Rabbit Polyclonal antibody. Positive WB detected in mouse skeletal muscle tissue, human stomach tissue. Observed molecular weight by Western-blot: 60 kDa

## Preparation

This antibody was obtained by immunization of MSL3 recombinant protein (Accession Number: NM\_078629). Purification method: Antigen affinity purified.

## Formulation

PBS with 0.1% sodium azide and 50% glycerol pH 7.3.

## Storage

Store at -20°C. DO NOT ALIQUOT

## Clonality

Polyclonal

## Ig Type

Rabbit IgG

## Applications

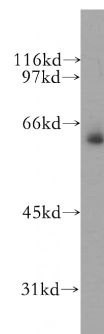
ELISA, WB

## Dilutions

Recommended Dilution:

WB: 1:500-1:5000

## Validations



mouse skeletal muscle tissue were subjected to SDS PAGE followed by western blot with Catalog No:112873(MSL3 antibody) at dilution of 1:500