

# Rat PAI-1 / SerpinE1 (Fc Tag) recombinant protein



Catalog Number: 502873

## General Information

### Gene Name Synonym

Endothelial plasminogen activator inhibitor;  
Serpin E1

### Protein Construction

A DNA sequence encoding the rat SERPINE1 (NP\_036752.1) (Met1-Pro402) was expressed with the Fc region of human IgG1 at the C-terminus.

### Organism

Rat

### Expression Host

Human Cells

## QC Testing

### Activity

Measured by its ability to inhibit uPA cleavage of a peptide substrate, N-carbobenzyloxy-Gly-Gly-Arg-7-amido-4-methylcoumarin (Z-GGR-AMC). The IC<sub>50</sub> value is < 10 nM.

### Purity

> 90 % as determined by SDS-PAGE

### Endotoxin

< 1.0 EU per µg of the protein as determined by the LAL method

### Stability

Samples are stable for up to twelve months from date of receipt at -70°C

### Predicted N terminal

Ser 24

### Molecular Mass

The recombinant rat SERPINE1 comprises 620 amino acids and has a predicted molecular mass of 69.6 kDa. The apparent molecular mass of the protein is approximately 70 kDa in SDS-PAGE under reducing conditions.

### Formulation

Lyophilized from sterile PBS, pH 7.4.

1. 5 % trehalose and mannitol are added as protectants before lyophilization.

2. Please contact us for any concerns or special requirements.

## Usage Guide

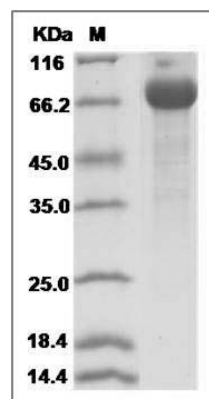
### Storage

Store it under sterile conditions at -20°C to -80°C. It is recommended that the protein be aliquoted for optimal storage. Avoid repeated freeze-thaw cycles.

### Reconstitution

Adding sterile water, prepare a stock solution of 0.25 mg/ml. Concentration is measured by UV-Vis.

### SDS-PAGE



Rat SerpinE1 / PAI-1 Protein (Fc Tag) SDS-PAGE