

# RASEF antibody

Catalog Number: 114473

## Product name

RASEF antibody

## Specificity

Human, Mouse; other species not tested.

## Antibody description

RASEF Rabbit Polyclonal antibody. Positive IHC detected in human pancreas cancer tissue. Positive WB detected in mouse testis tissue. Observed molecular weight by Western-blot: 83 kDa

## Preparation

This antibody was obtained by immunization of RASEF recombinant protein (Accession Number: NM\_152573). Purification method: Antigen affinity purified.

## Formulation

PBS with 0.1% sodium azide and 50% glycerol pH 7.3.

## Storage

Store at -20°C. DO NOT ALIQUOT

## Clonality

Polyclonal

## Ig Type

Rabbit IgG

## Applications

ELISA, WB, IHC

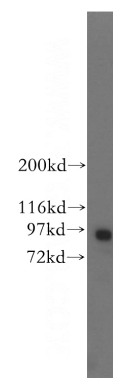
## Dilutions

Recommended Dilution:

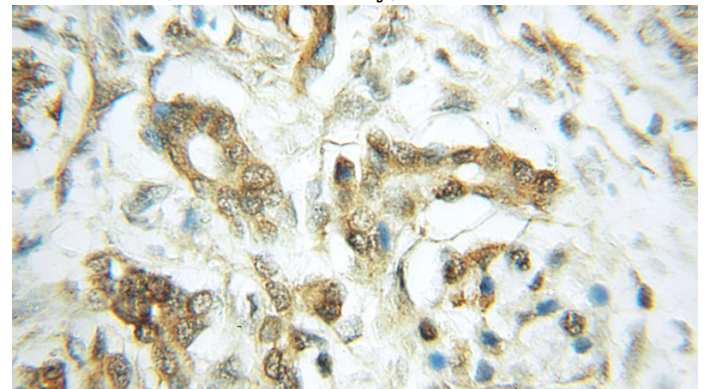
WB: 1:500-1:5000

IHC: 1:20-1:200

## Validations



mouse testis tissue were subjected to SDS PAGE followed by western blot with Catalog No:114473(RASEF antibody) at dilution of 1:300



Immunohistochemical of paraffin-embedded human pancreas cancer using Catalog No:114473(RASEF antibody) at dilution of 1:50 (under 10x lens)