

CCPG1 antibody



Catalog Number: 109073

Product name

CCPG1 antibody

IP: 1:200-1:2000

IHC: 1:20-1:200

Specificity

Human, Mouse, Rat; other species not tested.

Antibody description

CCPG1 Rabbit Polyclonal antibody. Positive WB detected in mouse lung tissue. Positive IP detected in mouse brain tissue. Positive IHC detected in human liver cancer tissue. Observed molecular weight by Western-blot: 87kd

Preparation

This antibody was obtained by immunization of CCPG1 recombinant protein (Accession Number: BC034914). Purification method: Antigen affinity purified.

Formulation

PBS with 0.02% sodium azide and 50% glycerol pH 7.3.

Storage

Store at -20°C. DO NOT ALIQUOT

Clonality

Polyclonal

Ig Type

Rabbit IgG

Applications

ELISA, WB, IHC, IP

Dilutions

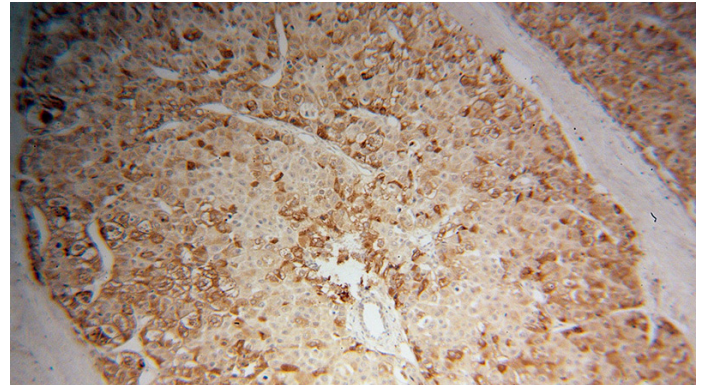
Recommended Dilution:

WB: 1:200-1:2000

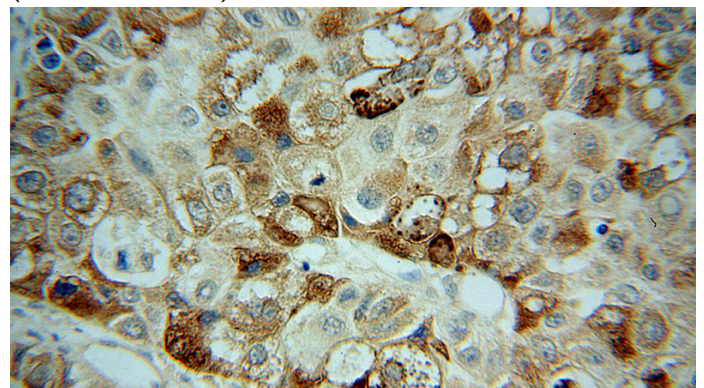
Validations



mouse lung tissue were subjected to SDS PAGE followed by western blot with Catalog No:109073(CCPG1 antibody) at dilution of 1:800



Immunohistochemical of paraffin-embedded human liver cancer using Catalog No:109073(CCPG1 antibody) at dilution of 1:50 (under 10x lens)



Immunohistochemical of paraffin-embedded

CCPG1 antibody

Catalog Number: 109073

human liver cancer using Catalog
No:109073(CCPG1 antibody) at dilution of 1:50
(under 40x lens)

IP Result of anti-CCPG1 (IP:Catalog No:109073,
4ug; Detection:Catalog No:109073 1:500) with
mouse brain tissue lysate 6000ug.

