

KLC1 antibody



Catalog Number: 112073

Product name

KLC1 antibody

IHC: 1:20-1:200

IF: 1:10-1:100

Specificity

human, mouse, rat; other species not tested.

Antibody description

KLC1 Rabbit Polyclonal antibody. Positive IHC detected in human brain. Positive IF detected in Hela. Positive WB detected in mouse brain tissue, COLO 320 cells, HepG2 cells, SH-SY5Y cells. Observed molecular weight by Western-blot: 61-70kd

Preparation

This antibody was obtained by immunization of KLC1 recombinant protein (Accession Number: NM_005552). Purification method: Antigen affinity purified.

Formulation

PBS with 0.02% sodium azide and 50% glycerol pH 7.3.

Storage

Store at -20°C. DO NOT ALIQUOT

Clonality

Polyclonal

Ig Type

Rabbit IgG

Applications

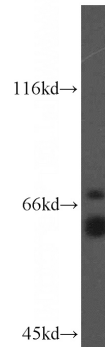
ELISA, WB, IHC, IF

Dilutions

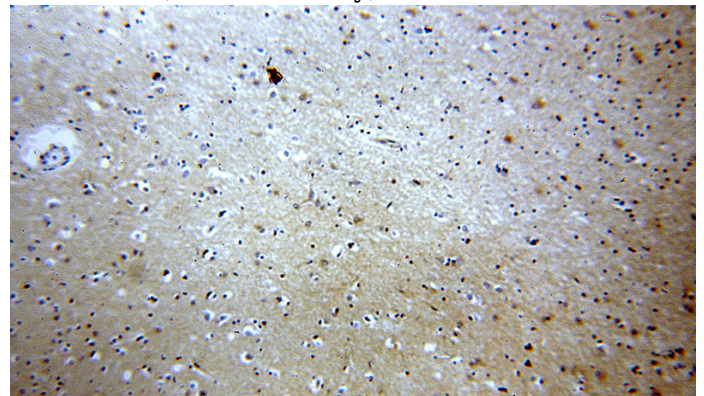
Recommended Dilution:

WB: 1:500-1:5000

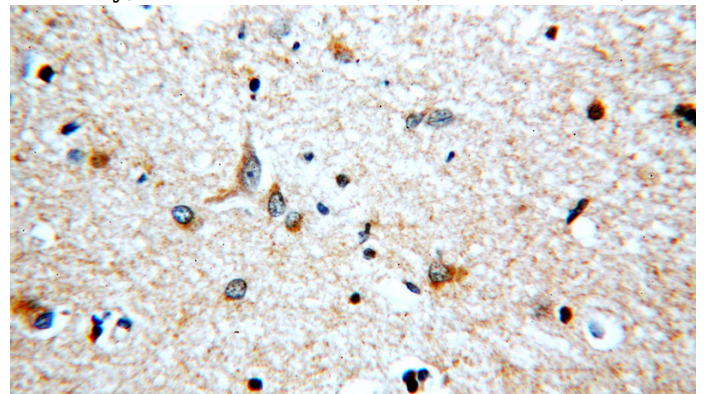
Validations



mouse brain tissue were subjected to SDS PAGE followed by western blot with Catalog No:112073(KLC1 antibody) at dilution of 1:300



Immunohistochemical of paraffin-embedded human brain using Catalog No:112073(KLC1 antibody) at dilution of 1:100 (under 10x lens)



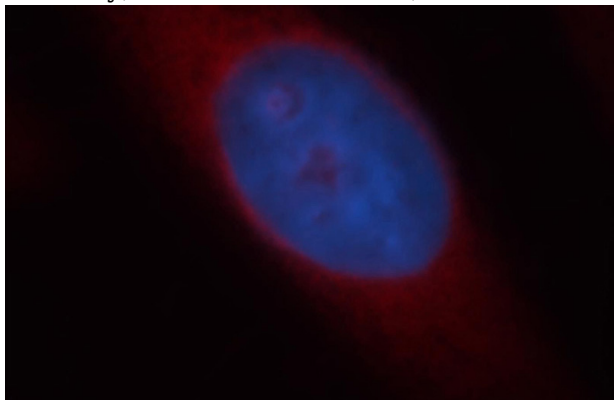
Immunohistochemical of paraffin-embedded human brain using Catalog No:112073(KLC1

KLC1 antibody



Catalog Number: 112073

antibody) at dilution of 1:100 (under 40x lens)



Immunofluorescent analysis of HeLa cells, using KLC1 antibody Catalog No:112073 at 1:25 dilution and Rhodamine-labeled goat anti-rabbit IgG (red). Blue pseudocolor = DAPI (fluorescent DNA dye).