

# SMYD5 Polyclonal Antibody



Catalog Number: 164763

## Product name

SMYD5 Polyclonal Antibody

## Specificity

Human, Mouse, Rat

## Antibody description

Polyclonal antibody to SMYD5

## Preparation

Antigen: Recombinant protein of human SMYD5

## Formulation

PBS with 0.02% sodium azide, 50% glycerol, pH7.3.

## Storage

Store at -20°C. Avoid freeze / thaw cycles.

## Clonality

Polyclonal

## Ig Type

Rabbit IgG

## Applications

WB, IHC, IF

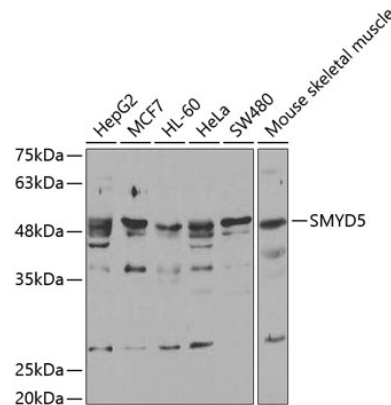
## Dilutions

WB 1:500 - 1:2000

IHC 1:50 - 1:100

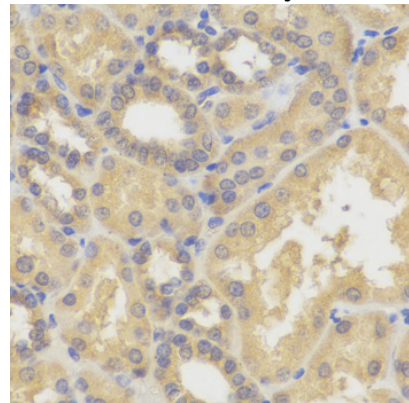
IF 1:50 - 1:100

## Validations



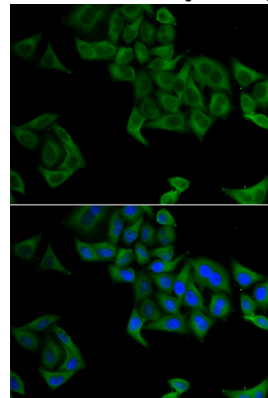
Western blot - SMYD5 Polyclonal Antibody

Western blot analysis of extracts of various cell lines, using SMYD5 antibody. Secondary antibody: HRP Goat Anti-Rabbit IgG (H+L) at 1:10000 dilution. Lysates/proteins: 25ug per lane. Blocking buffer: 3% nonfat dry milk in TBST.



Immunohistochemistry - SMYD5 Polyclonal Antibody

Immunohistochemistry of paraffin-embedded human kidney using SMYD5 antibody.



Immunofluorescence - SMYD5 Polyclonal Antibody

# SMYD5 Polyclonal Antibody



Catalog Number: 164763

---

Immunofluorescence analysis of A549 cells using SMYD5 antibody . Blue: DAPI for nuclear staining.