

# PDCD2 antibody

Catalog Number: 113763

## Product name

PDCD2 antibody

WB: 1:200-1:2000

IP: 1:200-1:2000

## Specificity

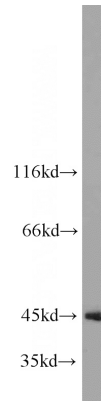
Human, Mouse, Zebrafish; other species not tested.

IHC: 1:20-1:200

## Antibody description

PDCD2 Rabbit Polyclonal antibody. Positive WB detected in HeLa cells, H7ES cells, mouse liver tissue. Positive IP detected in HeLa cells. Positive IHC detected in human ovary tumor tissue. Observed molecular weight by Western-blot: 37-39kd,45kd

## Validations



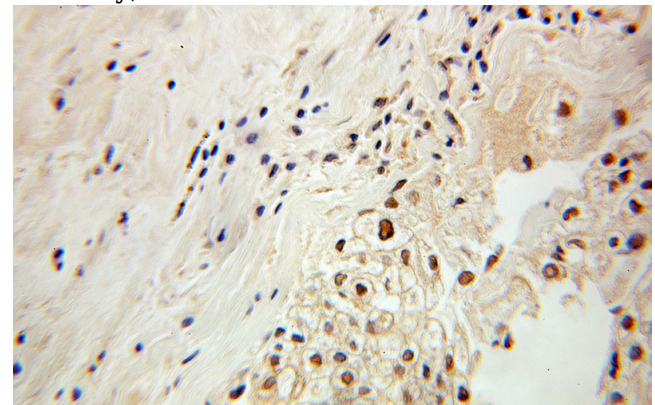
## Preparation

This antibody was obtained by immunization of PDCD2 recombinant protein (Accession Number: NM\_002598). Purification method: Antigen affinity purified.

HeLa cells were subjected to SDS PAGE followed by western blot with Catalog No:113763(PDCD2 antibody) at dilution of 1:800

## Formulation

PBS with 0.1% sodium azide and 50% glycerol pH 7.3.



## Storage

Store at -20°C. DO NOT ALIQUOT

## Clonality

Polyclonal

Immunohistochemical of paraffin-embedded human ovary tumor using Catalog No:113763(PDCD2 antibody) at dilution of 1:100 (under 10x lens)

## Ig Type

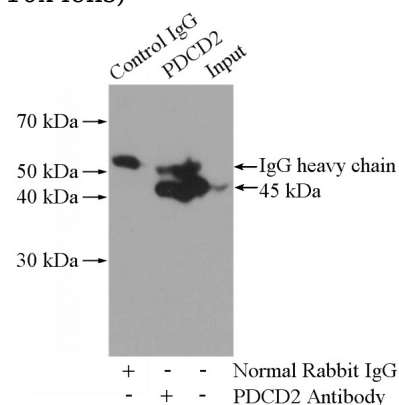
Rabbit IgG

## Applications

ELISA, WB, IHC, IP

## Dilutions

Recommended Dilution:



# PDCD2 antibody



Catalog Number: 113763

---

IP Result of anti-PDCD2 (IP:Catalog No:113763,

4ug; Detection:Catalog No:113763 1:500) with HeLa cells lysate 2800ug.