

Anti-interleukin-20 antibody



Catalog Number: 100763

Product name

Anti-interleukin-20 antibody

Specificity

mouse IL20

Antibody description

Rabbit polyclonal to interleukin-20

Preparation

Produced in rabbits immunized with A synthetic peptide corresponding to the center region of the mouse mIL20, and purified by antigen affinity chromatography.

Formulation

0.2 µm filtered solution in PBS

Storage

This antibody can be stored at 2°C-8°C for one month without detectable loss of activity. Antibody products are stable for twelve months from date of receipt when stored at -20°C to -80°C.

Preservative-Free.

Sodium azide is recommended to avoid contamination (final concentration 0.05%-0.1%). It is toxic to cells and should be disposed of properly. Avoid repeated freeze-thaw cycles.

Clonality

Polyclonal

Ig Type

Rabbit IgG

Applications

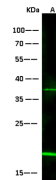
WB, IP

Dilutions

WB: 10-50 µg/ml

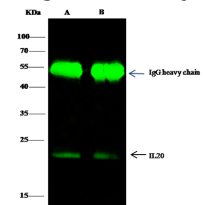
IP: 4-6 µg/mg of lysate

Validations



Items	Lanes	A
Sample (whole cell lysate)		K562
Sample Volume (µg/lane)		30
Gel		13%SDS-PAGE reducing gel
Recommended Concentration		10-50 µg/ml
Secondary Antibody		Dylight 800 labeled Antibody To Rabbit IgG (H+L), at 1:5000 dilution.
Explanation		Developed using Odyssey imaging system. Predicted band size : 20 kDa Observed band size : 18 kDa Additional bands at : 37 kDa (We are unsure as to the identity of these extra bands. They are possible non-specific binding).

IL20 Antibody, Rabbit PAb, Antigen Affinity



Items	Lanes	A	B
Sample (whole cell lysate)		MCF-7	K562
Sample quantity		0.5 mg	
IP antibody quantity		2 µg	
Protein G agarose		1.5 µl of 50% Protein G Agarose	
Gel		13%SDS-PAGE reducing gel	
Primary antibody		KLI1-SMCC-simA-63 antibody at 10 µg/ml	
Secondary antibody		Dylight 800-labeled antibody to rabbit IgG (H+L), at 1:5000 dilution.	

Purified, Western blot

IL20 Antibody, Rabbit PAb, Antigen Affinity

Purified, Immunoprecipitation