

# Human CXADR / CAR (His & Fc Tag) recombinant protein



Catalog Number: 503363

## General Information

### Gene Name Synonym

CVB3-binding protein; Coxsackievirus B-adenovirus receptor; HCVADR

### Protein Construction

A DNA sequence encoding the human CXADR (NP\_001329.1) extracellular domain (Met 1-Gly 237) was fused with the C-terminal polyhistidine-tagged Fc region of human IgG1 at the C-terminus.

### Organism

Human

### Expression Host

Human Cells

## QC Testing

### Activity

Measured by the ability of the immobilized protein to support the adhesion of mouse neutrophils. When  $5 \times 10^4$  cells/well are added to CXADR coated plates (4  $\mu\text{g/ml}$  and 100  $\mu\text{l/well}$ ), approximately 20%-40% will adhere specifically after 60 minutes at 37°C.

### Purity

> 92 % as determined by SDS-PAGE

### Endotoxin

< 1.0 EU per  $\mu\text{g}$  of the protein as determined by the LAL method

### Stability

Samples are stable for up to twelve months from date of receipt at -70°C

### Predicted N terminal

Leu 20

### Molecular Mass

The recombinant human CXADR/Fc is a disulfide-linked homodimer. The reduced monomer consists of 466 amino acids and has a predicted molecular mass of 52 kDa. As a result of glycosylation, the apparent molecular mass of rh CXADR/Fc monomer migrates with an apparent molecular mass of 60-65 kDa in SDS-PAGE under reducing conditions.

### Formulation

Lyophilized from sterile PBS, pH 7.4

1. 5 % trehalose and mannitol are added as protectants before lyophilization.

2. Please contact us for any concerns or special requirements.

## Usage Guide

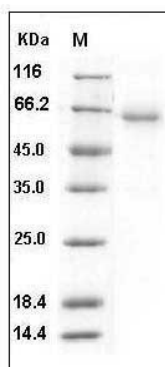
### Storage

Store it under sterile conditions at -20°C to -80°C. It is recommended that the protein be aliquoted for optimal storage. Avoid repeated freeze-thaw cycles.

### Reconstitution

Adding sterile water, prepare a stock solution of 0.25 mg/ml. Concentration is measured by UV-Vis.

### SDS-PAGE



# Human CXADR / CAR (His & Fc Tag) recombinant protein



Catalog Number: 503363

---

Human CXADR / CAR Protein (His & Fc Tag) SDS- PAGE