

SRBD1 antibody

Catalog Number: 115663

Product name

SRBD1 antibody

Specificity

Human, Mouse; other species not tested.

Antibody description

SRBD1 Rabbit Polyclonal antibody. Positive WB detected in mouse testis tissue, mouse brain tissue. Positive IP detected in mouse brain tissue. Observed molecular weight by Western-blot: 100-120 kDa

Preparation

This antibody was obtained by immunization of SRBD1 recombinant protein (Accession Number: BC032538). Purification method: Antigen affinity purified.

Formulation

PBS with 0.1% sodium azide and 50% glycerol pH 7.3.

Storage

Store at -20°C. DO NOT ALIQUOT

Clonality

Polyclonal

Ig Type

Rabbit IgG

Applications

ELISA, WB, IP

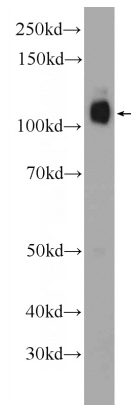
Dilutions

Recommended Dilution:

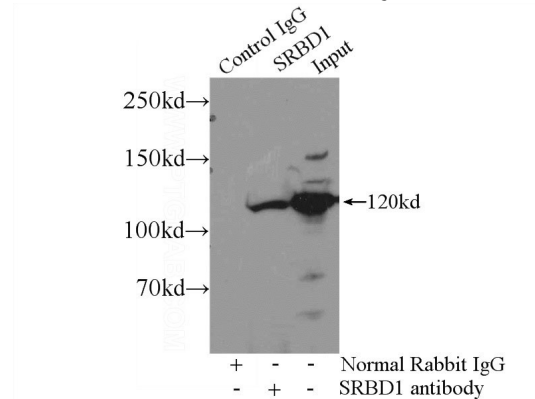
WB: 1:200-1:1000

IP: 1:200-1:1000

Validations



mouse testis tissue were subjected to SDS PAGE followed by western blot with Catalog No:115663(SRBD1 Antibody) at dilution of 1:300



IP Result of anti-SRBD1 (IP:Catalog No:115663, 4ug; Detection:Catalog No:115663 1:300) with mouse brain tissue lysate 4000ug.